



## 2 Onslow Place SYLVANIA NSW

4 3 4

Perfectly positioned in a peaceful cul-de-sac, this beautifully renovated family home delivers a generous dual-level layout showcasing high-quality finishes and a strong emphasis on effortless modern living.

### Principal Features:

Brand new open-plan gourmet kitchen with abundant bench and storage space

Four bedrooms - three with new built-in robes, air-conditioning and ceiling fans

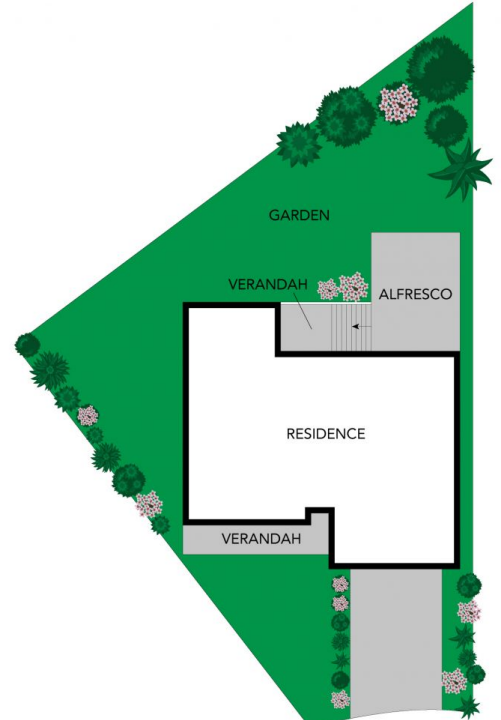
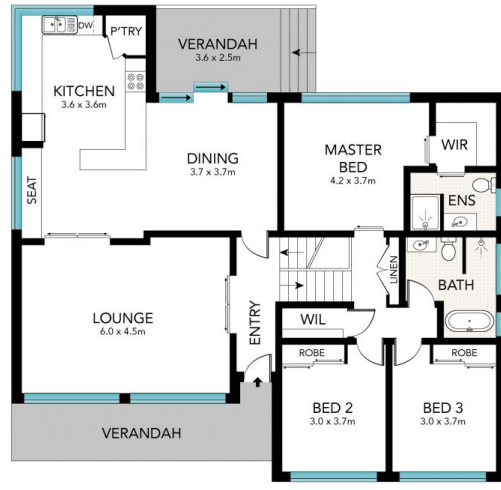
Three luxurious new bathrooms, including ensuite and walk-in robe to the master suite

[For full version visit the website](https://www.crippsandcripps.com.au)

**Type** : House  
**Price** : \$ 2,305,000  
**Land Size** : 613 sqm  
**View** : <https://www.crippsandcripps.com.au/sale/nsw/sutherland/sylvania/residential/house/8460338>



**Jason Hawes**  
02 9523 6511



Scale in metres. Indicative only. Dimensions are approximate. All information contained herein is gathered from sources we believe to be reliable. However, we cannot guarantee its accuracy and interested persons should rely on their own enquiries.

2 Onslow Place, Sylvania