



## 267 Burraneer Bay Road CARINGBAH SOUTH NSW

3 1 2

Sitting on an impressive level block with a land size of approx. 663.9sqm plus a frontage of 15.24m approx., this direct north-facing residence is a prime development opportunity (STCA), suitable for a duplex occupancy.

The existing home features three good sized bedrooms, an open plan living/dining area and a neat and tidy kitchen and bathroom, presenting ample space for comfortable living. A level grassed yard flows gently to the front.

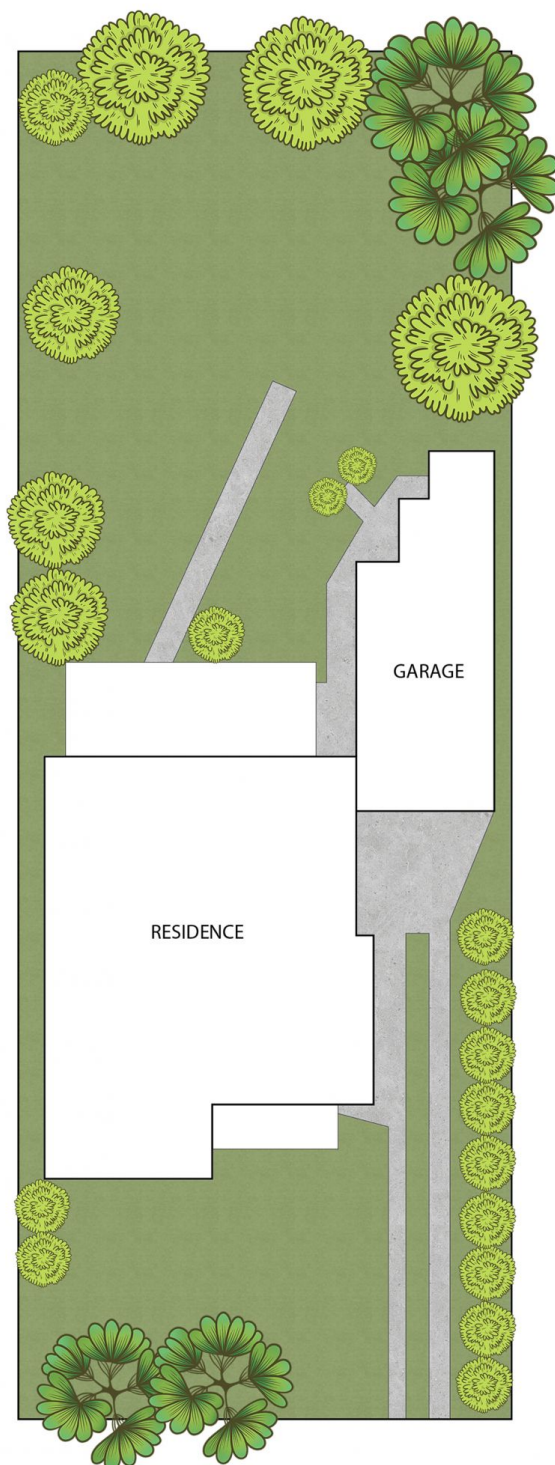
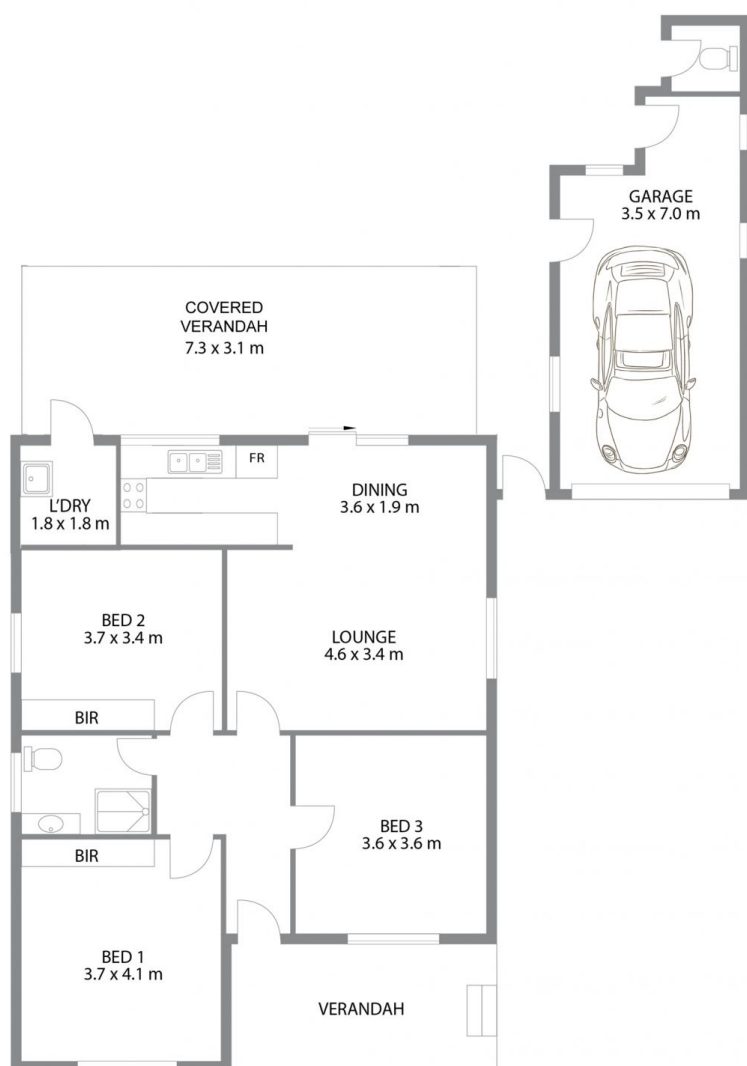
An alfresco entertaining area providing a private outdoor area for children and pets, plus side driveway access to a lock-up garage with additional off-street parking.

Land size - 663sqm approx., frontage 15.24m approx. - Prime development opportunity (STCA), R2 Zoning: Low Density Residential, FSR 0.55:1

**Land Size** : 663.9 sqm  
**View** : <https://www.crippsandcripps.com.au/sale/nsw/sutherland/caringbah-south/residential/home/7955159>



**Jason Hawes**  
**02 9523 6511**



## 267 Burraneer Bay Road, Caringbah South

DISCLAIMER: All care has been taken in preparing this floor plan, however the accuracy is not guaranteed and no liability will be accepted for any reliance placed upon it

Produced by Sydney Media Projects, email: [sydneymediaprojects@gmail.com](mailto:sydneymediaprojects@gmail.com)