



4 Andromeda Crescent ENGADINE NSW

3 2 1

Escape to the serenity of this original 3-bedroom brick home, where charm meets nature, and every day feels like a retreat. With a thoughtful layout that includes separate living and dining spaces opening to a sunroom boasting breathtaking views of the national park, this property is a haven for those seeking a genuine connection with the outdoors.

Features include:

- * Three bedrooms featuring built-in wardrobes, ensuring ample space for all your storage needs, the main bedroom with a ceiling fan.
- * Immaculate bathroom with separate toilet
- * Open plan original kitchen with dishwasher and walk-in pantry
- * Bask in the natural light and soak up the sun in the

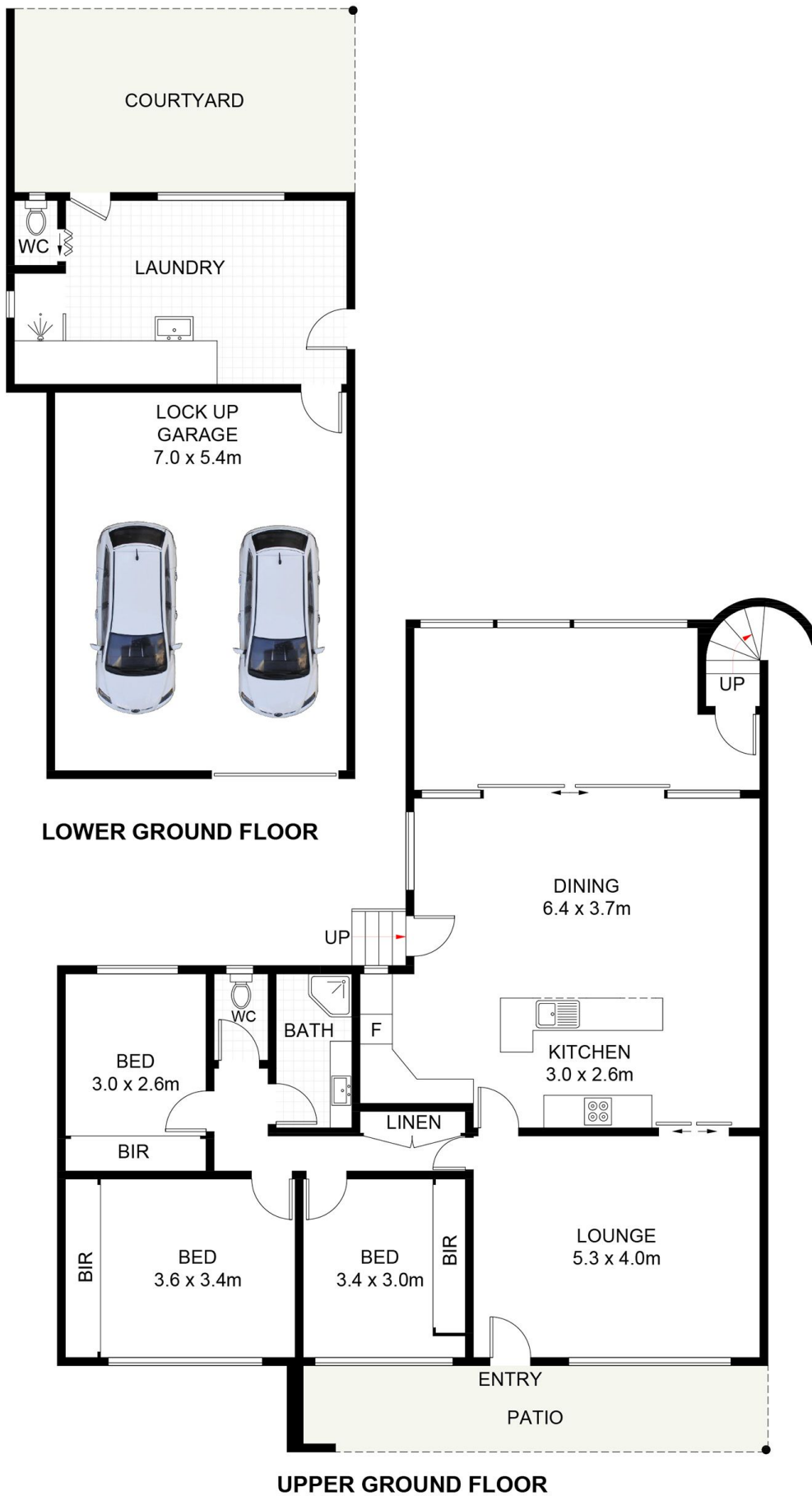
Price : \$ 1,385,000
Land Size : 556.4 sqm
View : <https://www.crippsandcripps.com.au/sale/nsw/sutherland/engadine/residential/house/7895296>



Brett Cripps
02 9523 6511



April Jones
02 9523 6511



4 Andromeda Crescent, Engadine

Scale in metres. Indicative only. Dimensions are approximate. All information contained herein is gathered from sources we believe to be reliable. However, we cannot guarantee its accuracy and interested persons should rely on their own enquiries. Some images may contain digital furniture.