



**1206/1 Foreshore Boulevard WOOLLOOWARE NSW**

2 2 1

This 12th-floor luxury two-bedroom apartment in the 'Sea' building of Woollooware Bay offers a flexible floorplan, a study, westerly views, and elevated perspectives of the Royal National Park. Enjoy resort-style amenities like a spa, sauna, gym, indoor and outdoor pools, BBQ facilities, and a rooftop cinema. Conveniently located near Cronulla's vibrant lifestyle and pristine beaches, this apartment is move-in ready or a valuable addition to any investment portfolio.

Unit Size: 101 Square Metres  
Parking: 13 Square Metres

Quarterly Outgoings:

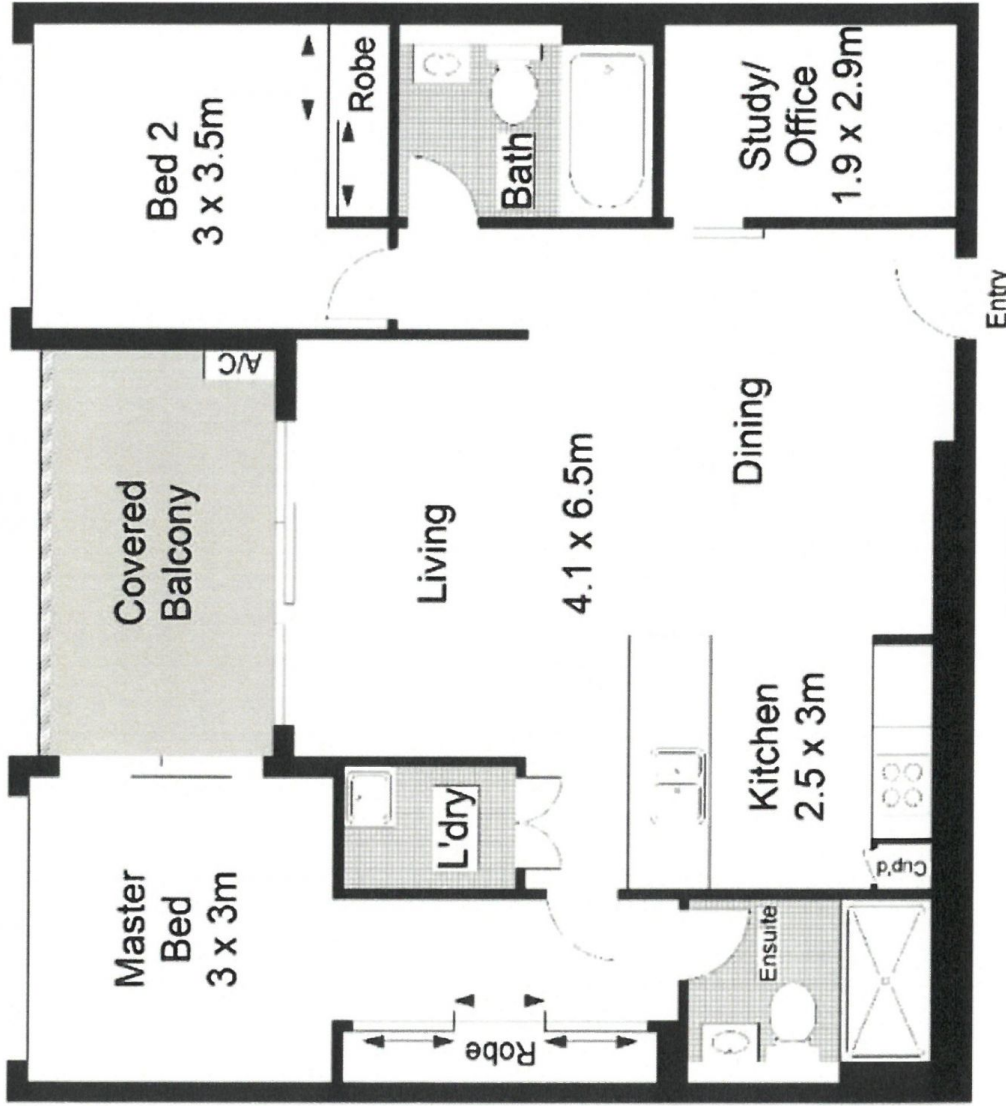
Council: \$303.50  
Water: \$171.41

**Price** : \$ 1,040,000

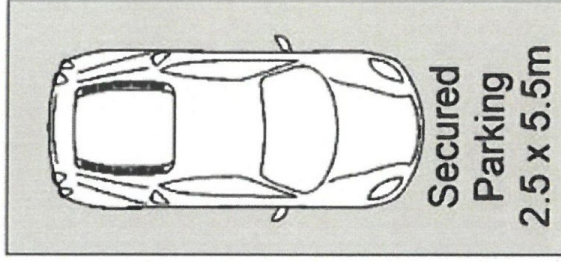
**View** : <https://www.crippsandcripps.com.au/sale/nsw/sutherland/woollooware/residential/unit/7879223>



**Jason Hawes**  
02 9523 6511



**LEVEL 12**



**BASEMENT**



These are indicative only. Dimensions are approximate. All measurements should be taken from the finished floor level. All measurements are to the center of the room. All measurements are to the center of the room. All measurements are to the center of the room.

1206/1 Foreshore Boulevard, Woollooware