



## 57/12 Corea Street SYLVANIA NSW

3 2 2

Combining light filled interiors, stylish finishes and 2 fantastic sized courtyards this townhouse provides an excellent low-maintenance home of quality and privacy with the convenience of having all amenities within an easy walking distance.

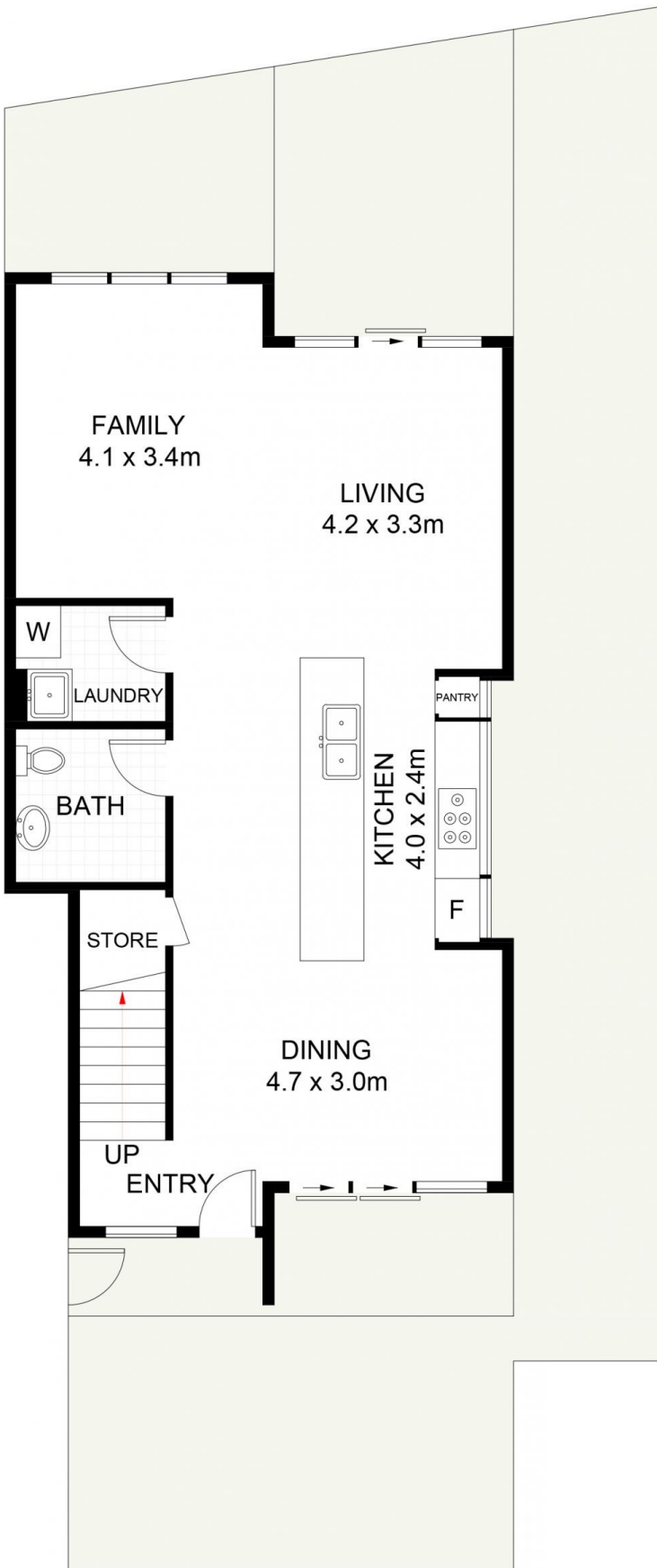
### Features include

- ? high ceilings throughout
- ? recessed blinds in all rooms
- ? split system A/C in every room
- ? undercover access from carpark to front door, plus close proximity of tandem car space to front door.
- ? easy street access
- ? gas BBQ outlet on decking
- ? large outdoor spaces - secure yard for pets with grass area
- ? Master bed has oversized wardrobe with double sink with

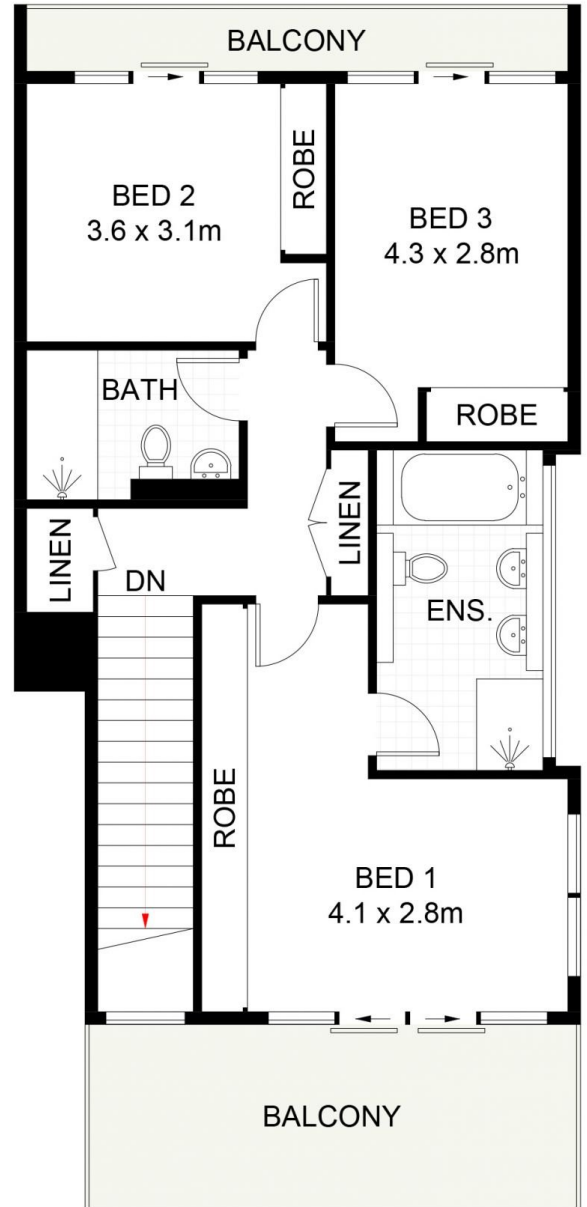
**View** : <https://www.crippsandcripps.com.au/sale/nsw/sutherland/sylvania/residential/townhouse/7833007>



**Brett Cripps**  
02 9523 6511



**FIRST FLOOR**



**SECOND FLOOR**



**57/12 Corea Street, Sylvania**

Scale in metres. Indicative only. Dimensions are approximate. All information contained herein is gathered from sources we believe to be reliable. However, we cannot guarantee its accuracy and interested persons should rely on their own enquiries. Some images may contain digital furniture.