



## 2/6-14 Park Street SUTHERLAND NSW

2 1 1

Located moments from Sutherland shops and transport is this convenient ground floor two bedroom unit with lift access to the basement garage.

### Features include:

- Combined lounge & dining. New carpet throughout.
- Freshly painted throughout
- Built-in to main bedroom
- Modern kitchen with plenty of bench and cupboard space
- Internal laundry with dryer
- Spacious balcony plus a single garage.

Strata: \$984.90 p/q Approx.  
Water: \$173.29 p/q Approx.  
Council: \$367.50 p/q Approx.

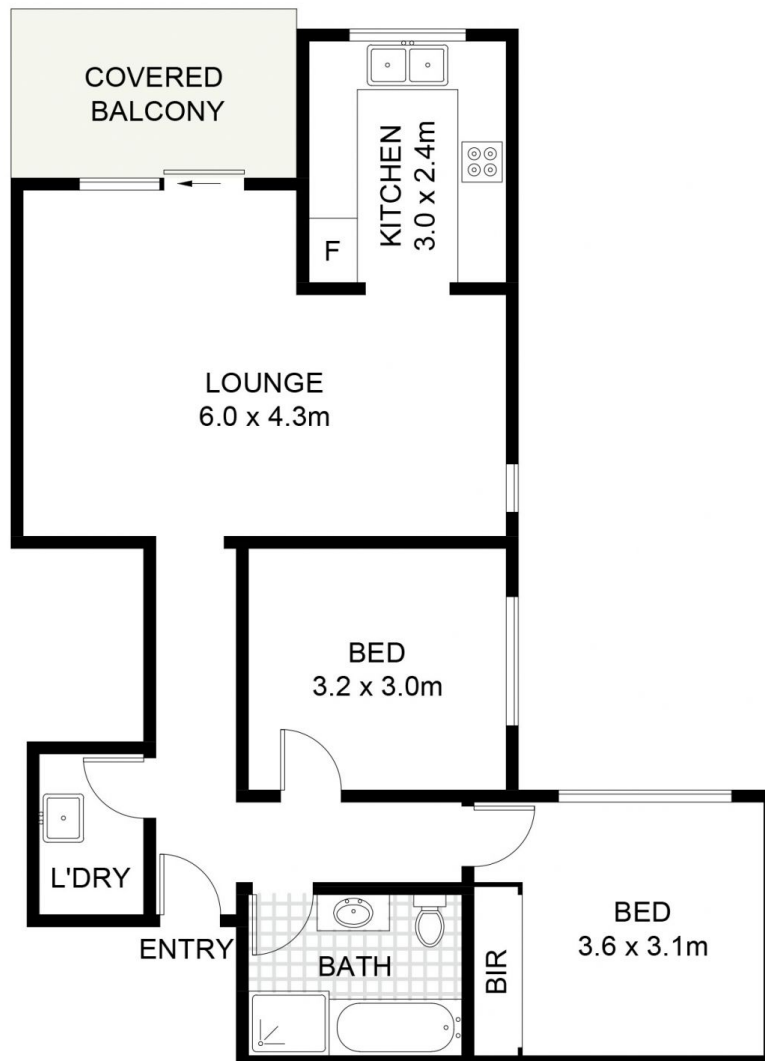
**View :** <https://www.crippsandcripps.com.au/sale/nsw/sutherland/sutherland/residential/unit/7787348>



**Brett Cripps**  
02 9523 6511



(NOT SHOWN IN ACTUAL  
LOCATION / ORIENTATION)



## 2/6-14 Park Street, Sutherland

Scale in metres. Indicative only. Dimensions are approximate. All information contained herein is gathered from sources we believe to be reliable. However, we cannot guarantee its accuracy and interested persons should rely on their own enquiries. Some images may contain digital furniture.