



## 279 President Avenue MIRANDA NSW

4 2 4

For the first time being offered in over 50 years, this 4 bedroom full brick family home is set on a fantastic 689sqm (approx) parcel of land. Presents a rare opportunity to renovate, rebuild or redevelop (STCA)

This practical layout features 3 generous bedrooms, kitchen, bath and an expansive living and dining area on the upper level which flows onto the large sunny patio overlooking the massive yard.

Self contained living space occupies the lower level which offers fourth bedroom, kitchen, bathroom and sizable dining area.

Ample opportunity to park onsite including double & tandem garages.

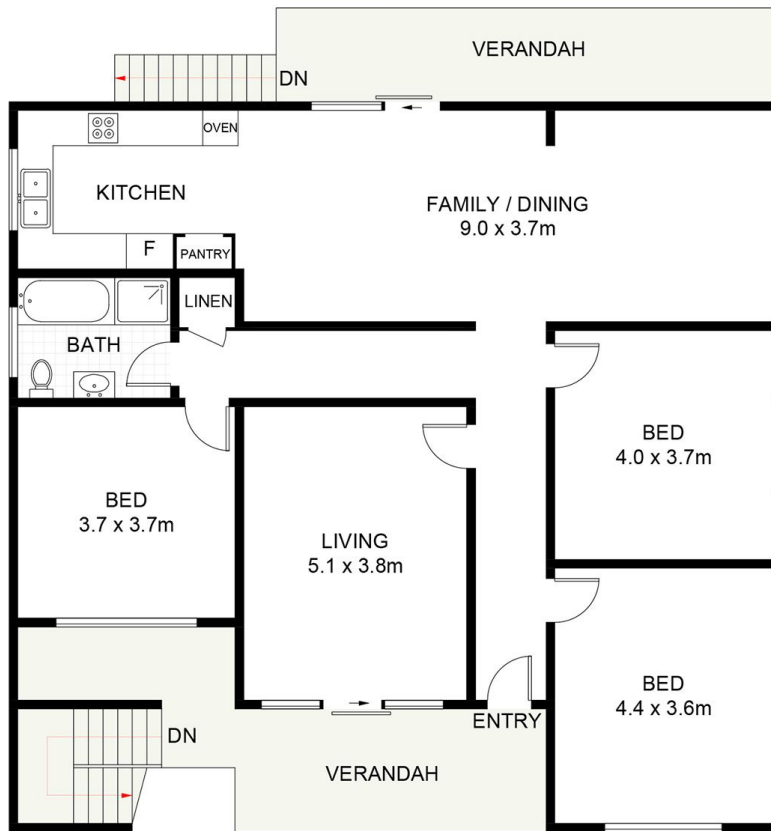
**Price** : \$ 1,570,000  
**Land Size** : 689 sqm  
**View** : <https://www.crippsandcripps.com.au/sale/nsw/sutherland/miranda/residential/house/7720473>



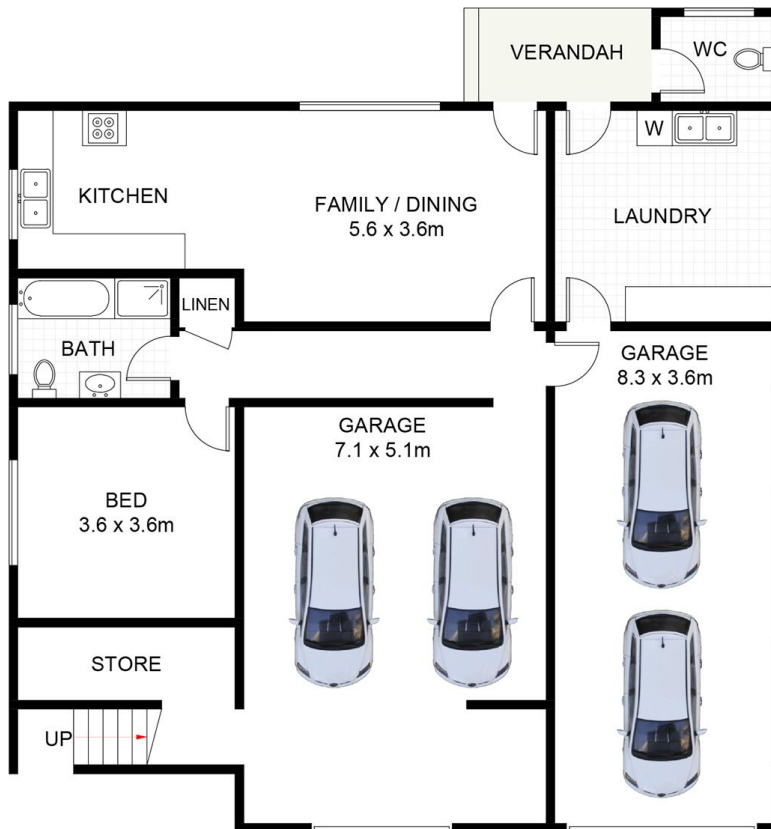
**Daniel Gordon**  
0410510034



**Brett Cripps**  
02 9523 6511



**GROUND FLOOR**



**LOWER GROUND FLOOR**



## 279 President Avenue, Miranda

Scale in metres. Indicative only. Dimensions are approximate. All information contained herein is gathered from sources we believe to be reliable. However, we cannot guarantee its accuracy and interested persons should rely on their own enquiries. Some images may contain digital furniture.