



110A North West Arm Road GYMEA NSW

4 🏠 2 🚗 2 🚗

Nestled in the desirable suburb of Gymea, this stunning property offers a lifestyle of comfort, luxury, and convenience. Perfectly positioned, this immaculate residence boasts an array of features that will leave you in awe.

Price : \$ 1,500,000

View : <https://www.crippsandcripps.com.au/sale/nsw/sutherland/gymea/residential/house/7600220>

Step inside this beautifully designed home and be greeted by an inviting ambiance and an abundance of natural light. The open-plan layout creates a seamless flow between the living, dining, and kitchen areas, providing an ideal space for relaxation and entertaining.

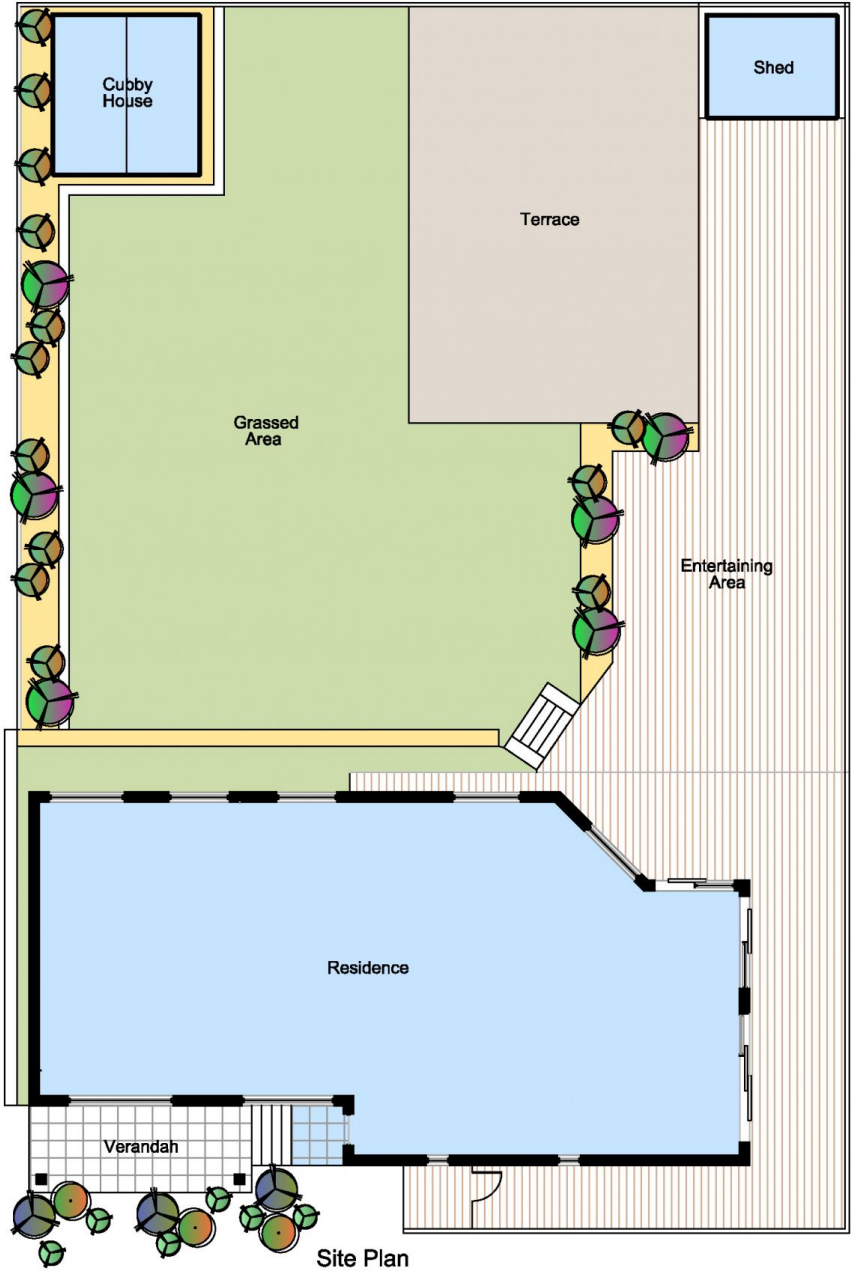
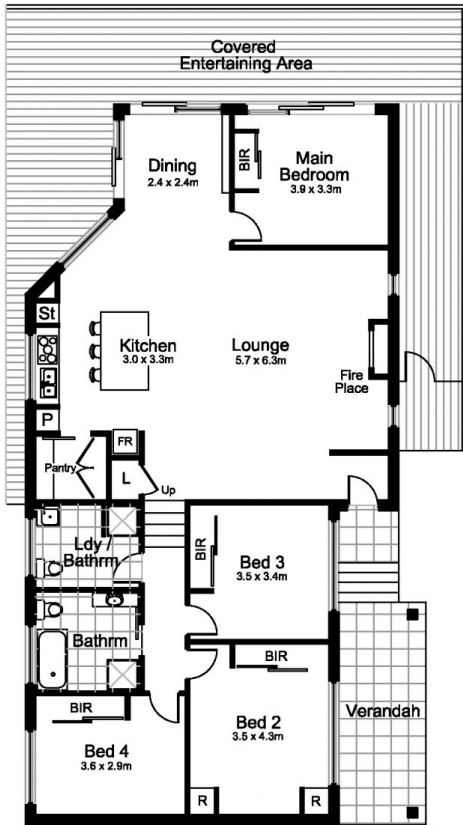
The modern kitchen is a culinary enthusiast's dream, featuring high-quality appliances, ample storage space, and sleek finishes. Whether you're preparing a casual meal or hosting a dinner party, this kitchen will inspire your inner chef.



Jason Hawes
02 9523 6511



Car Spaces
6.0 x 10.0m



110A Northwest Arm Rd, GyMEA

DISCLAIMER: All care has been taken in preparing this floor plan, however the accuracy is not guaranteed and no liability will be accepted for any reliance placed upon it.
Produced by SYDNEY MEDIA PROJECTS mob: 0414 697 215 email: sydneymediaprojects@gmail.com