



## 20 Bolaro Avenue GYMEA NSW

3 1 2

This well-maintained character brick residence offers an elevated sunny aspect in a highly sought and convenient location offering comfortable living as is and endless opportunities for the future.

The property boasts a light and bright living and dining area with separate spacious kitchen featuring electric cooking appliances. Three ample bedrooms share the family bathroom with separate shower and bath.

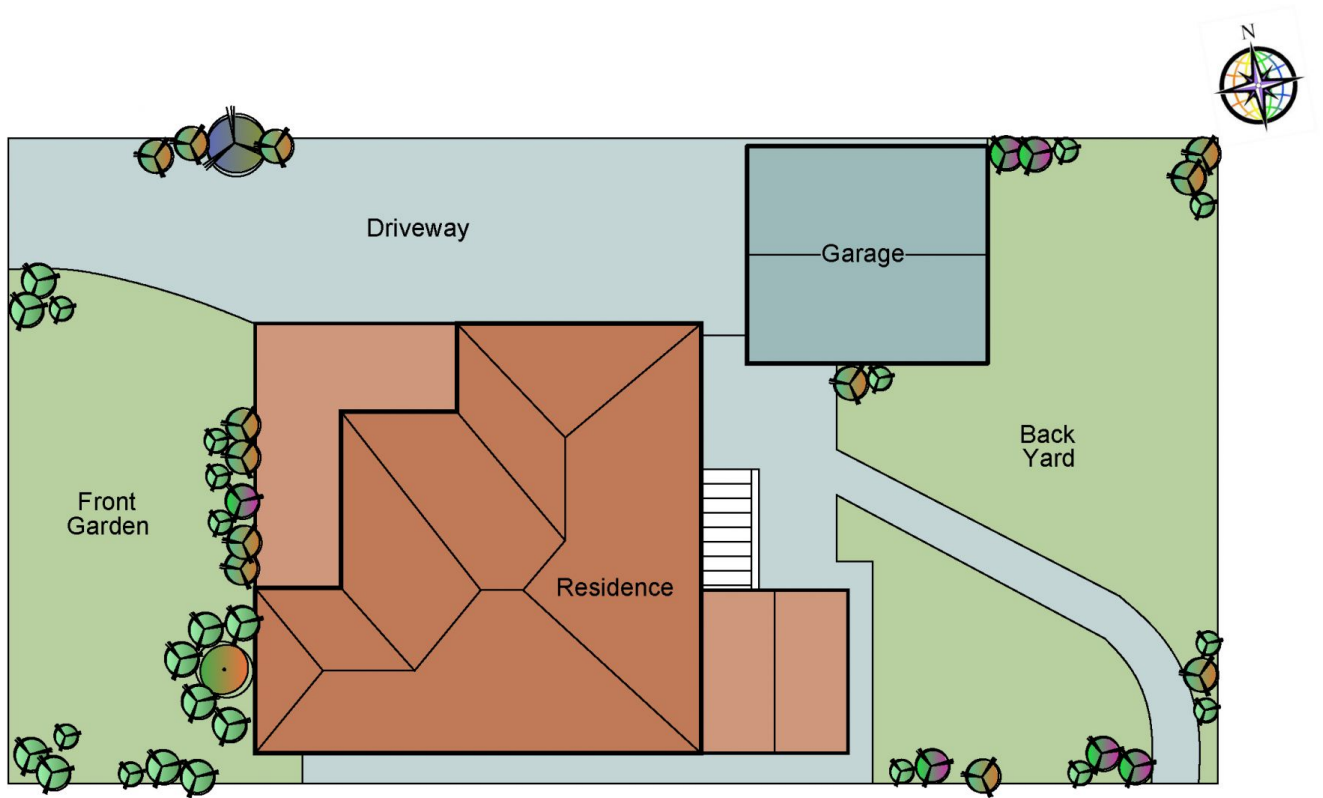
The lower level of the home offers a double side-by-side lock-up garage, work area plus enormous under house storage area.

The location of the property - is within walking distance of the modern conveniences of Gymea Village with Gymea Tradies moments away. South Village Kirrawee is just a

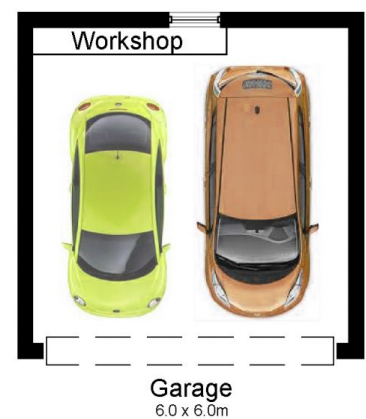
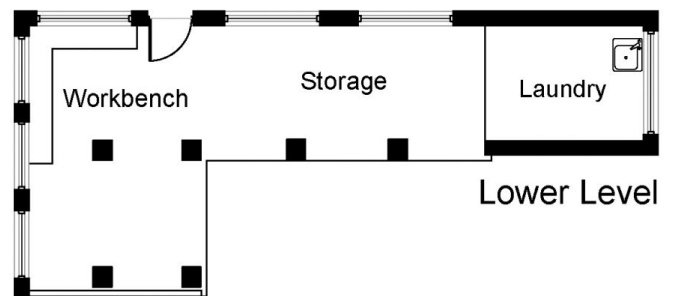
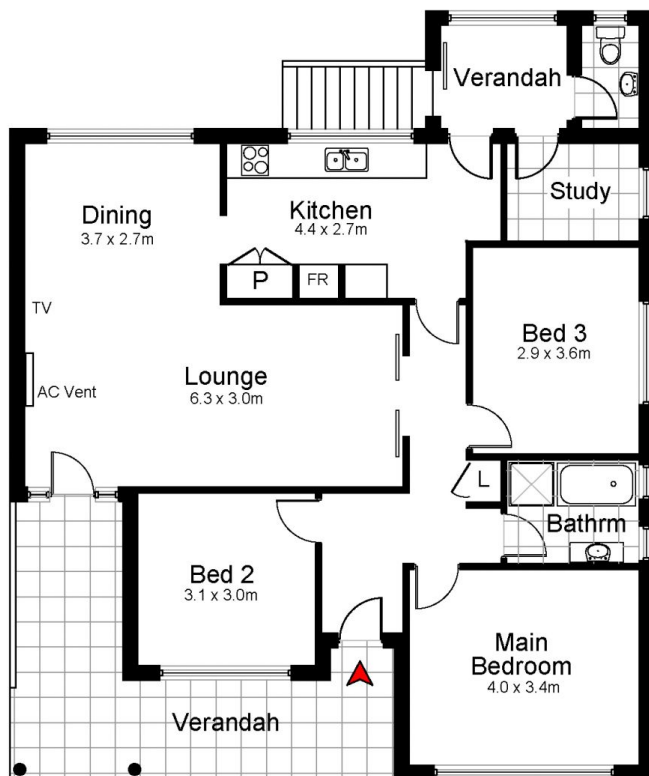
**Price** : \$ 1,300,000  
**Land Size** : 550.1 sqm  
**View** : <https://www.crippsandcripps.com.au/sale/nsw/sutherland/gymea/residential/house/7270282>



**Jason Hawes**  
**02 9523 6511**



Site Plan



## 20 Bolaro Avenue, GYMEA

DISCLAIMER: All care has been taken in preparing this floor plan, however the accuracy is not guaranteed and no liability will be accepted for any reliance placed upon it.  
Produced by SYDNEY MEDIA PROJECTS mob: 0414 697 215 email: sydneymediaprojects@gmail.com