



## 2/6 Sturt Road CRONULLA NSW

3 1 2

Architecturally designed, award-winning Cronulla penthouse style duplex apartment on the market for only the second time.

With views from the north facing entertainer's terrace, this unique duplex offers elevated, comfortable one-level living.

A short walk to the beach, Shark Park and the many Cronulla, and under development, Woollooware Bay shops and restaurants, this low maintenance open-plan property is still nestled far enough away from the hustle and bustle to offer a relaxed lifestyle.

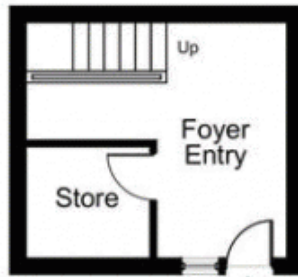
Boasting a versatile floorplan and offering a multitude of options, this property is ideal for those wanting to revamp to suit their style.

**Price** : \$ 1,800,000  
**Building Size** : 160 sqm  
**Land Size** : 312 sqm  
**View** : <https://www.crippsandcripps.com.au/sale/nsw/sutherland/cronulla/residential/apartment/6726550>



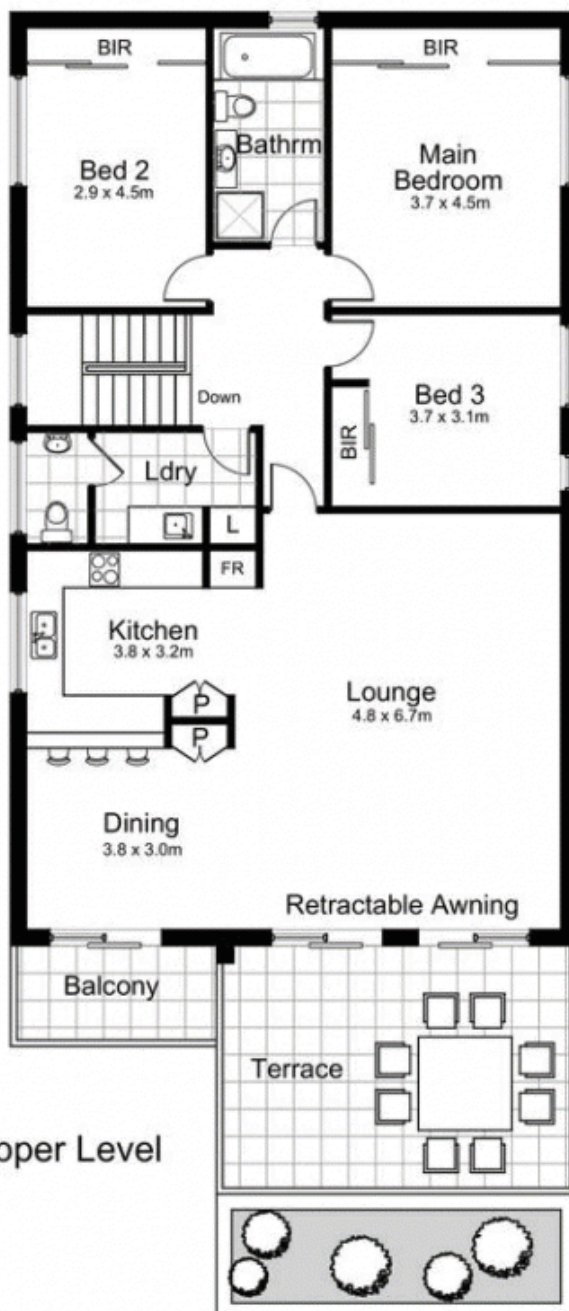
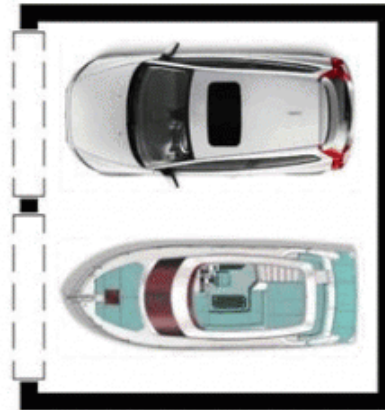
**Jason Hawes**  
**02 9523 6511**



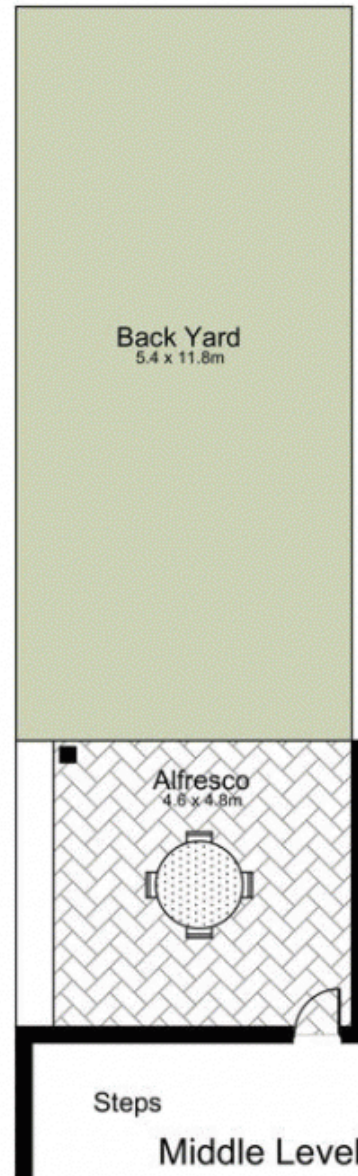


Lower Level

Garage  
6.0 x 5.2m



Upper Level



Steps

Middle Level

## 2/6 Sturt Road, CRONULLA

DISCLAIMER: All care has been taken in preparing this floor plan, however the accuracy is not guaranteed and no liability will be accepted for any reliance placed upon it.  
Produced by SYDNEY MEDIA PROJECTS mob: 0414 697 215 email: sydneymediaprojects@gmail.com