



**8/84-88 Glencoe Street SUTHERLAND NSW**

**2  1  1 **

A rare opportunity to secure this one of kind oversized terrace apartment in the highly sought after Poinciana complex.

Located ideally on the ground floor position with privacy and open-plan spaces in mind. Within moments of Sutherland's CBD, this modern apartment offers spacious light-filled interiors from its stunning eastern northern aspect.

Located within moments of public transport, local schools, shops and restaurants this fantastic property is ideal for the astute buyer or investor alike.

Contact Agent for more information today.

Property Features

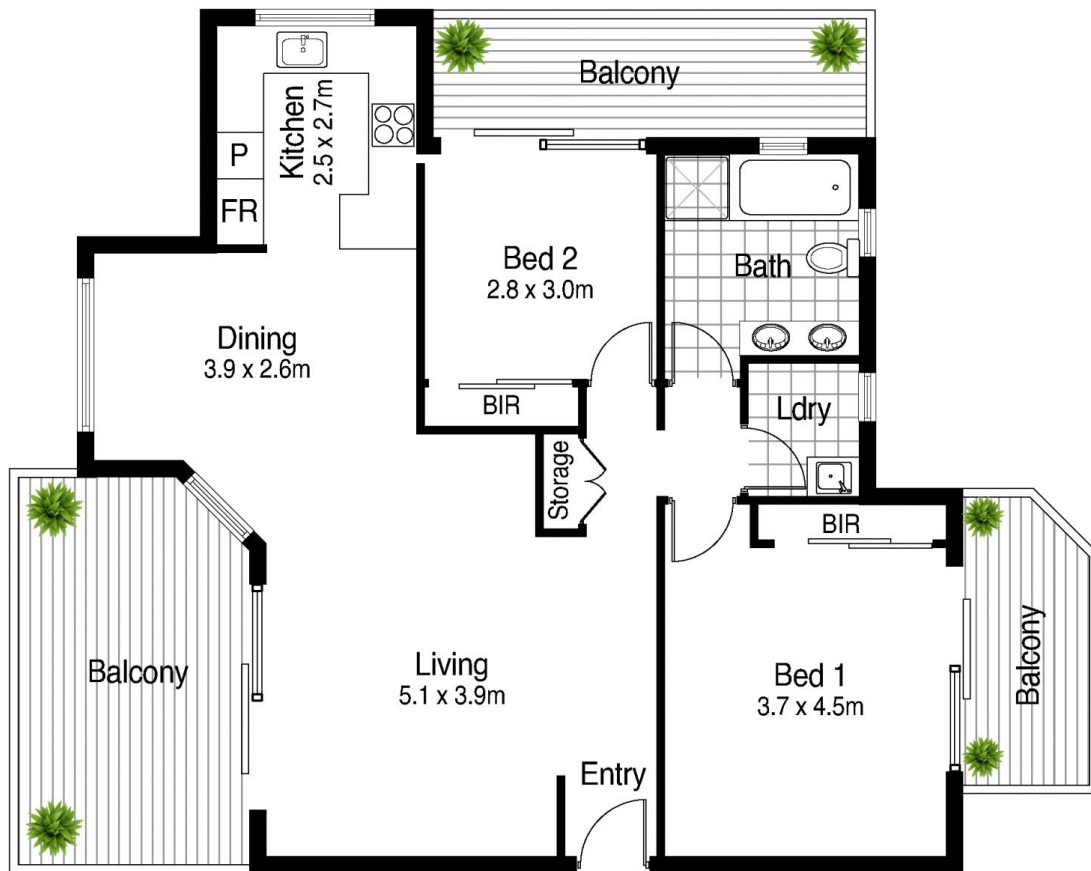
**Price** : \$ 811,500  
**Building Size** : 130 sqm  
**View** : <https://www.crippsandcripps.com.au/sale/nsw/sutherland/sutherland/residential/unit/6674777>



**Danielle Belshaw**  
02 9523 6511



**Samantha Biddlecombe**  
02 9523 6511



Total Area = 130m<sup>2</sup>  
Internal = 109m<sup>2</sup>

Garage  
3.1 x 6.8m



## 8/88 Glencoe Street, Sutherland

DISCLAIMER: All care has been taken in preparing this floor plan, however the accuracy is not guaranteed and no liability will be accepted for any reliance placed upon it  
Produced by Sydney Media Projects, email: [info@sydneymediaprojects.com.au](mailto:info@sydneymediaprojects.com.au)