



9/331-335 President Avenue GYMEA NSW

2 **1** **1**

Entry via Chapman Street

Ideal for those seeking peace, privacy and utmost convenience, this ground floor North facing apartment captures sunlight combined with a spacious and open layout.

It is superbly located, footsteps from GyMEA Shopping Village and a range of lifestyle conveniences.

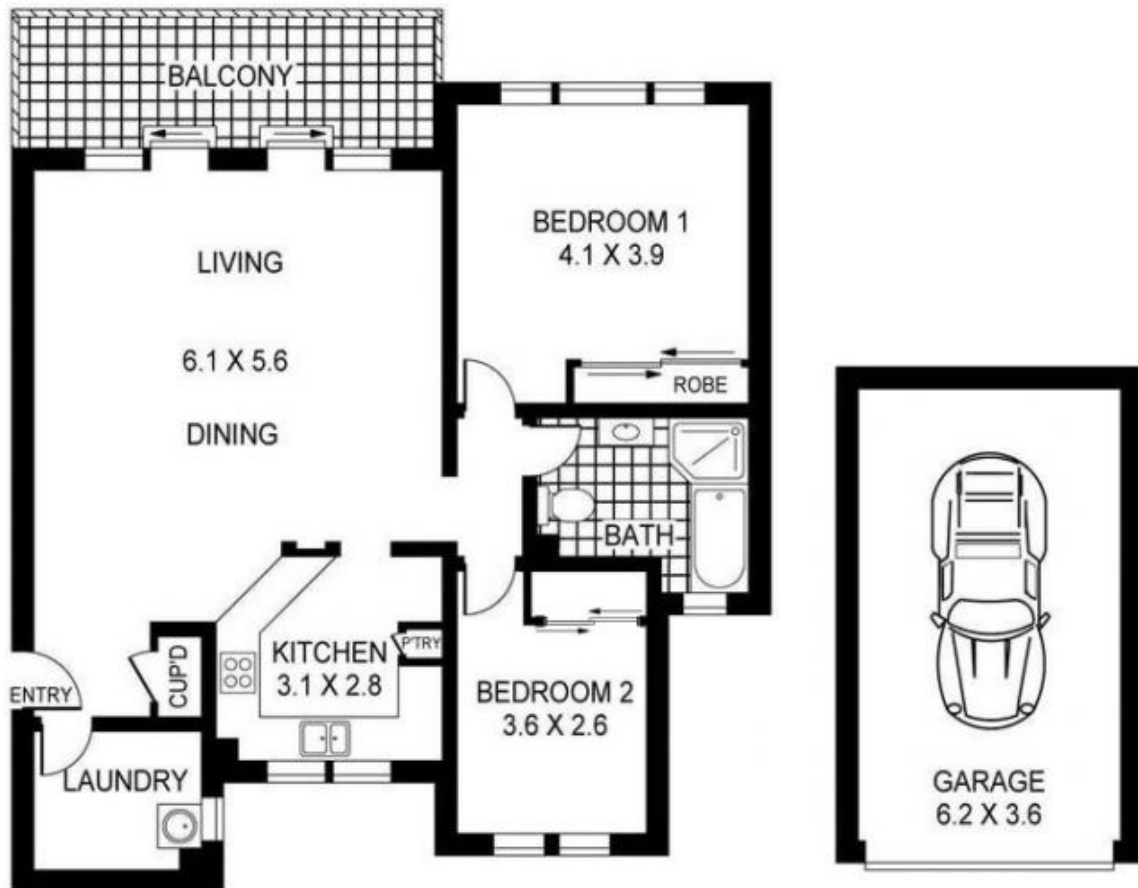
Astute apartment buyers should not miss the opportunity to buy in this well looked after double brick complex, positioned at the back of the block the property proudly boasts many features that include:

Open plan living and dining area with air conditioning that flows out to the courtyard/balcony.

Price : \$ 735,000
Building Size : 114 sqm
Land Size : 92 sqm
View : <https://www.crippsandcripps.com.au/sale/nsw/sutherland/gyMEA/residential/unit/6667173>



Jason Hawes
02 9523 6511



FIRST FLOOR

NOTE :- SINGLE LOCK-UP GARAGE



ALL INFORMATION CONTAINED HEREIN IS GATHERED FROM SOURCES WE BELIEVE TO BE RELIABLE. HOWEVER WE CANNOT GUARANTEE ITS ACCURACY AND INTERESTED PERSONS SHOULD RELY ON THEIR OWN ENQUIRIES. DIMENSIONS ARE APPROXIMATE. Ref. No: 7251

SCALE BAR in metres