



**830/13-15 Gerrale Street CRONULLA NSW**

2 2 2

We present to you this exceptional penthouse unit in Grosvenor house. This is the first time this Penthouse has been offered to the market in over 30 years, don't miss this fantastic opportunity.

The unique penthouse is only one of two units in the building with a double lock-up garage inclusive of additional basement storage, the unit features 3 balconies on the first floor alone perfect for entertaining and soaking up the evening sunsets. There is potential for future expansion on the 9th floor (subject to council and strata approval ) with concept plans and town planner assessment information available upon request. The Grosvenor House penthouse has a private key lift access which offers complete privacy and security for peace of mind.

The penthouse is conveniently situated in the heart of

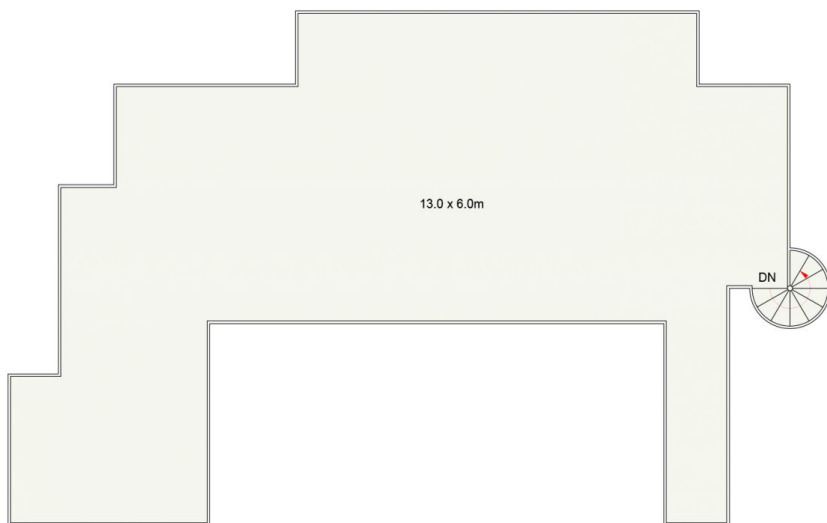
**Building Size** : 351 sqm  
**View** : <https://www.crippsandcripps.com.au/sale/nsw/sutherland/cronulla/residential/unit/6597736>



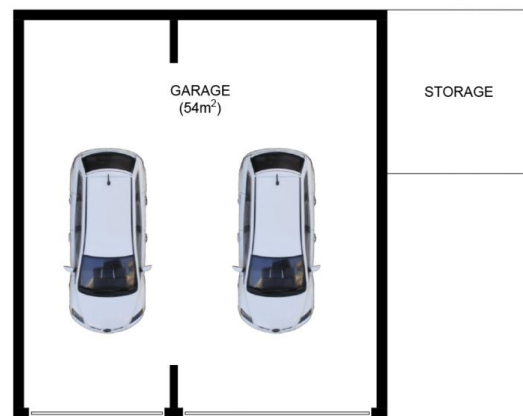
**Danielle Belshaw**  
02 9523 6511



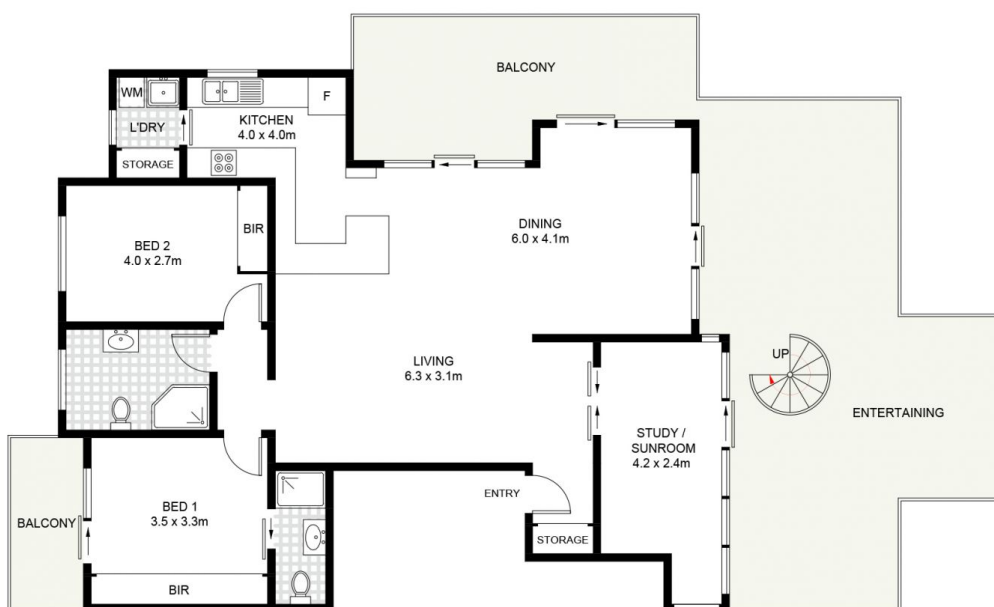
**Brett Cripps**  
02 9523 6511



ROOF TOP TERRACE



(NOT SHOWN IN ACTUAL LOCATION / ORIENTATION)



FIRST FLOOR



## 830/13-15 Gerrale Street, Cronulla

Scale in metres. Indicative only. Dimensions are approximate. All information contained herein is gathered from sources we believe to be reliable. However, we cannot guarantee its accuracy and interested persons should rely on their own enquiries. Some images may contain digital furniture.