



## 11/30 Talara Road GYMEA NSW

2 1 1

This newly updated 2 bedroom apartment is located on the top floor in central Gymea, this renovated apartment enjoys a sunny north facing aspect.

### Features include:

- Freshly painted throughout
- Brand new bathroom
- Large covered balcony, leafy outlook ideal for entertaining
- Modern kitchen with stainless appliances
- Spacious, double bedrooms both with built-in wardrobes
- Large internal laundry
- Oversized single lock-up garage
- Walking distance to Gymea village, restaurants and train station
- Outdoor pool included for residents use

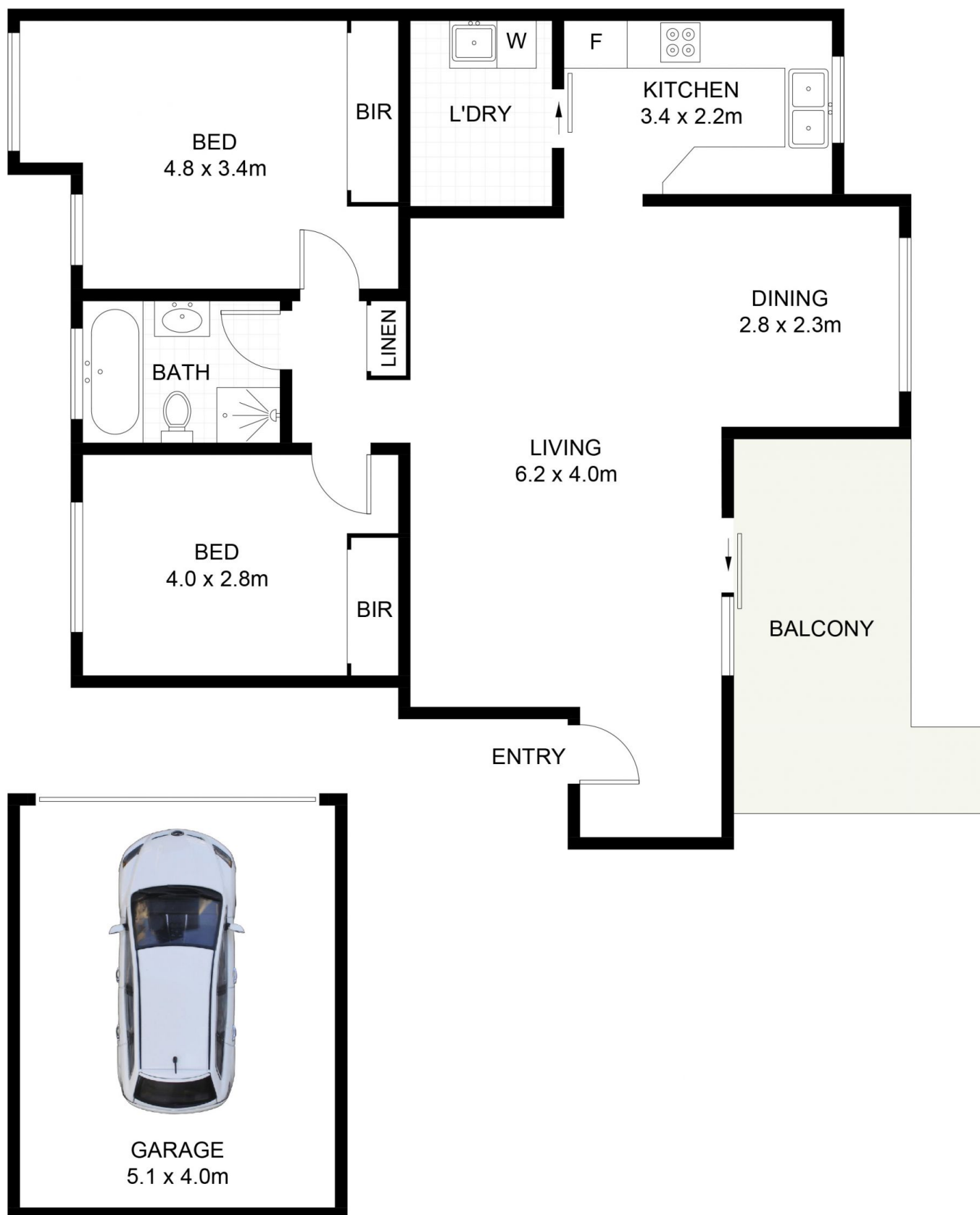
**View :** <https://www.crippsandcripps.com.au/sale/nsw/sutherland/gymea/residential/unit/6352014>



**Brett Cripps**  
02 9523 6511



**Samantha Biddlecombe**  
02 9523 6511



(NOT SHOWN IN ACTUAL  
LOCATION / ORIENTATION)



11/30 Talara Road, GyMEA

Scale in metres. Indicative only. Dimensions are approximate. All information contained herein is gathered from sources we believe to be reliable. However, we cannot guarantee its accuracy and interested persons should rely on their own enquiries. Some images may contain digital furniture.