



## 27 Chamberlain Avenue CARINGBAH NSW

3 2 2

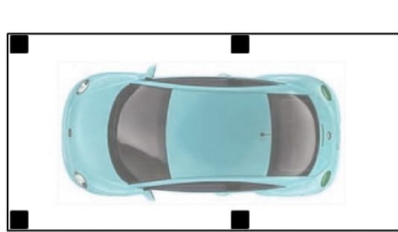
Offering an enviable Sutherland Shire lifestyle in the heart of Caringbah, this renovated family home sits on 632.3 sqm of level family-friendly land.

Large living area and separate dining area  
 Plantation shutters and downlights throughout  
 Updated kitchen with breakfast bar and dishwasher  
 Second living area that flows to a great entertainers deck  
 Three good sized bedrooms all with built-in robes  
 Main bathroom between bedroom 2 and bedroom 3  
 Sizeable attic storage with attic ladder  
 Single lock up garage with carport at rear  
 Sparkling in-ground pool at the rear of the property  
 Level 632.3 sqm block of land clear of any easements with a 12.19 metres frontage  
 Scope for families to renovate or recreate  
 Moments to Westfield Miranda, city trains and quality

**Price** : \$ 1,431,000  
**Land Size** : 632.3 sqm  
**View** : <https://www.crippsandcripps.com.au/sale/nsw/sutherland/caringbah/residential/house/6250590>



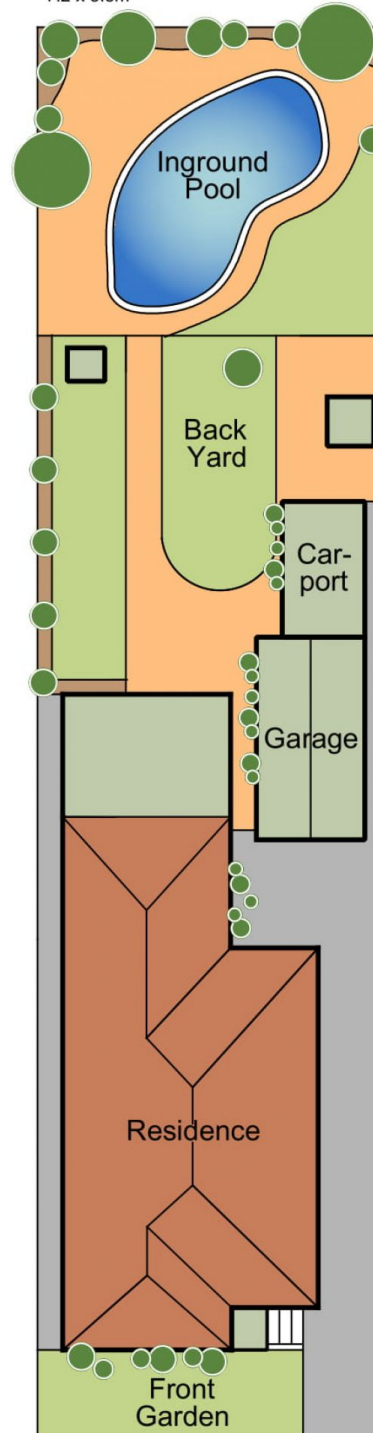
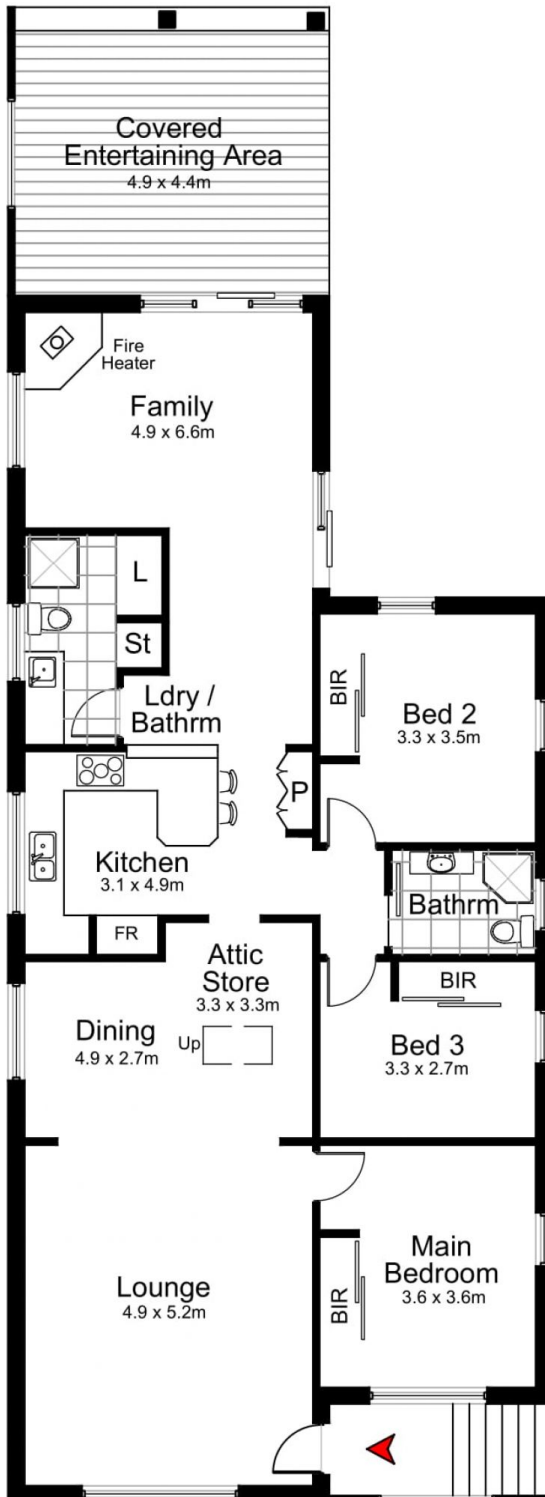
**Jason Hawes**  
 02 9523 6511



Carport  
6.0 x 3.0m



Garage  
7.2 x 3.3m



Chamberlain Avenue  
Site Plan

## 27 Chamberlain Avenue, CARINGBAH

DISCLAIMER: All care has been taken in preparing this floor plan, however the accuracy is not guaranteed and no liability will be accepted for any reliance placed upon it.  
Produced by SYDNEY MEDIA PROJECTS mob: 0414 697 215 email: sydneymediaprojects@gmail.com