



1/530 President Avenue SUTHERLAND NSW

2 **2** **1**

Enjoying a ground floor position this appealing 2 bedroom unit in its well kept condition is centrally located within walking distance to schools, shops, local cafes and eateries as well as public transport options.

Offering 2 generous sized bedrooms both with en suited bathrooms, built in robes and an open plan feel to the unit this property is well suited to a wide range of buyers from the first home purchasers to investors alike offering much opportunity to make it your next home.

Property features include:

*Spacious open plan living & dining space.

*Original kitchen with ample cupboard storage & electric cook top.

Building Size : 95 sqm

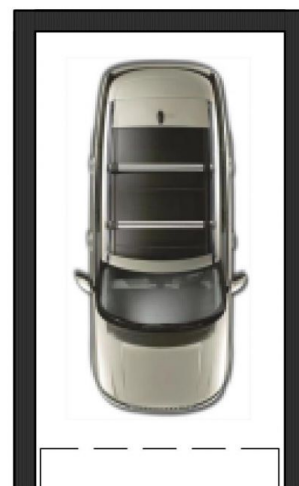
View : <https://www.crippsandcripps.com.au/sale/nsw/sutherland/sutherland/residential/unit/5957270>



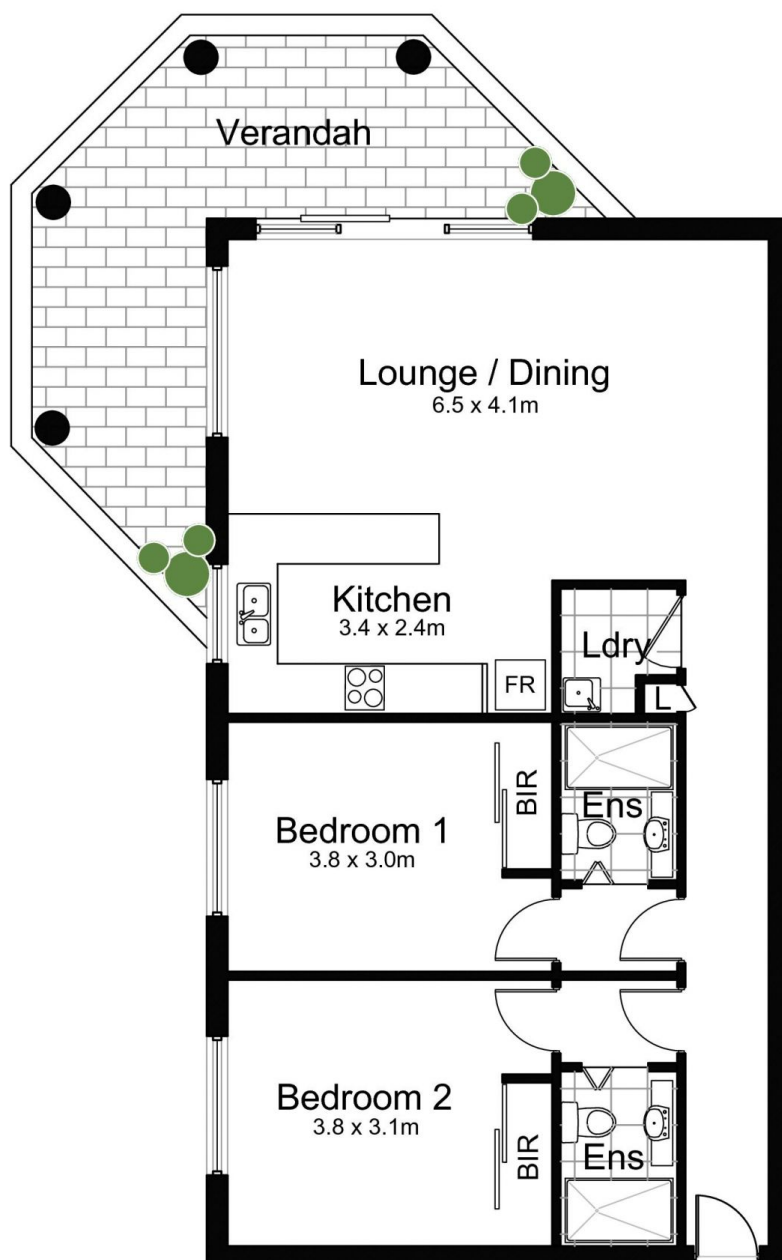
Danielle Belshaw
02 9523 6511



Jason Hawes
02 9523 6511



Garage
3.0 x 5.5m



1/530 President Avenue, SUTHERLAND

DISCLAIMER: All care has been taken in preparing this floor plan, however the accuracy is not guaranteed and no liability will be accepted for any reliance placed upon it.
Produced by PRODUCT PHOTOGRAPHY STUDIO mob: 0414 697 215 email: mgphoto@people.net.au