



11/49-53 Belmont Street SUTHERLAND NSW

2 1 2

This spectacularly well appointed two-storey townhouse style unit is located on the second and third floor of the building and has 4 balcony's for complete separation for privacy within.

View : <https://www.crippsandcripps.com.au/sale/nsw/sutherland/sutherland/residential/unit/5957261>

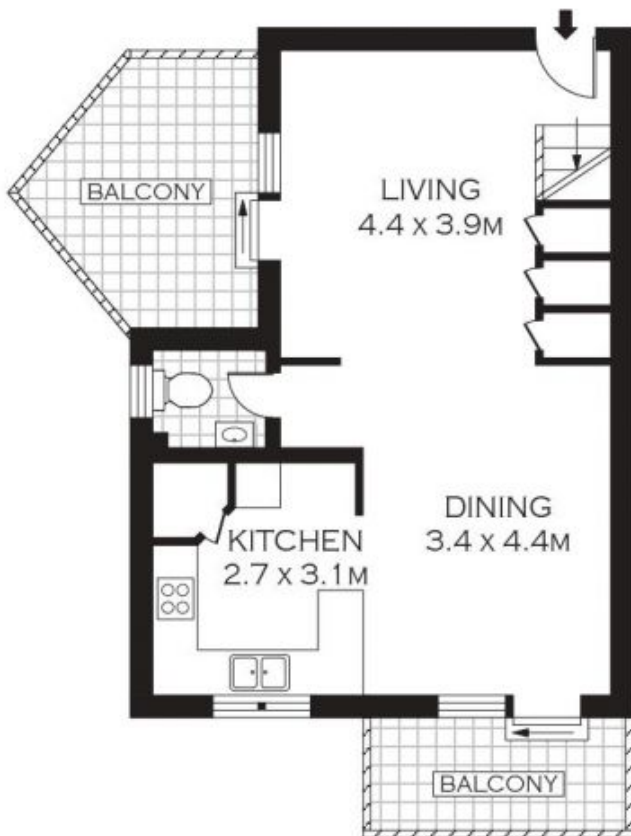
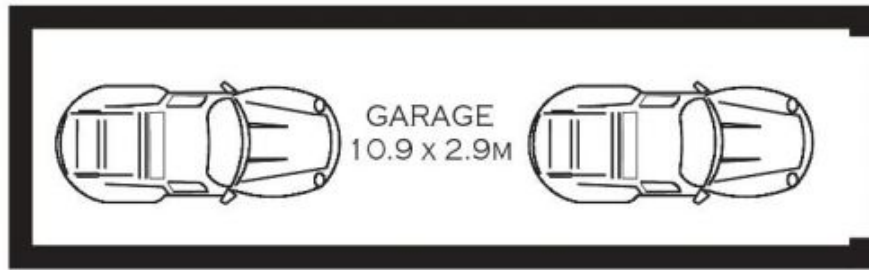
The block is fitted with an intercom for security as well as offering secure access to and from tandem garage parking and also easy access to street level.

The Custom finishes in this unit includes floating timber and ceramic tile flooring, stainless steel kitchen appliances, granite bench tops, good size lounge and dining, built ins to bedrooms, air conditioning and lots more.

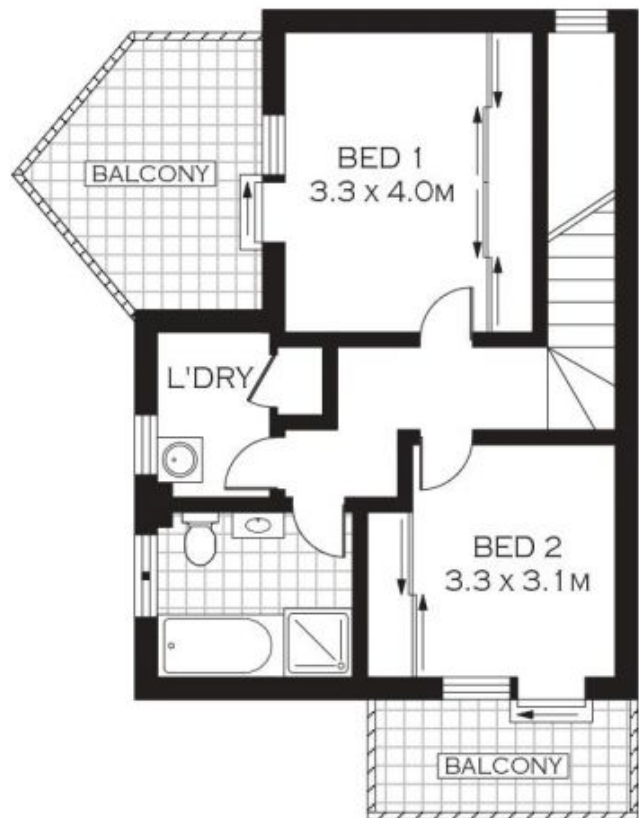
This unit offers the luxury of a maintenance free, sophisticated and convenient lifestyle just steps from restaurants, shopping, schools and the train.



Brett Cripps
02 9523 6511



LOWER LEVEL



TOP LEVEL



PLANS SHOWN ONLY INDICATIVE OF LAYOUT. DIMENSIONS ARE APPROXIMATE.
FLOOR PLANS BY WWW.REALESTATEMARKETINGAUSTRALIA.COM.AU
REF. No: 5625

NOTE : TANDEM LOCK-UP GARAGE



11/53 BELMONT STREET

SUTHERLAND