



13 Woollooware Road WOOLLOOWARE NSW

3 2 5

Positioned in popular North Woollooware, this well maintained dual level home offers a well proportioned and versatile layout and perfectly blends style, space and privacy ideal for family living.

Modern updates throughout with quality fixtures and fittings
 Generously sized bedrooms
 Oversized master with walk-in robe and ensuite
 Dual living and dining spaces
 Modern kitchen with high end appliances
 Covered outdoor entertaining deck which leads to level yard
 Huge garage with workshop and storage
 Ample additional parking options for cars, boats, caravans, etc.

Ideally located, this home is an easy walk to Woollooware

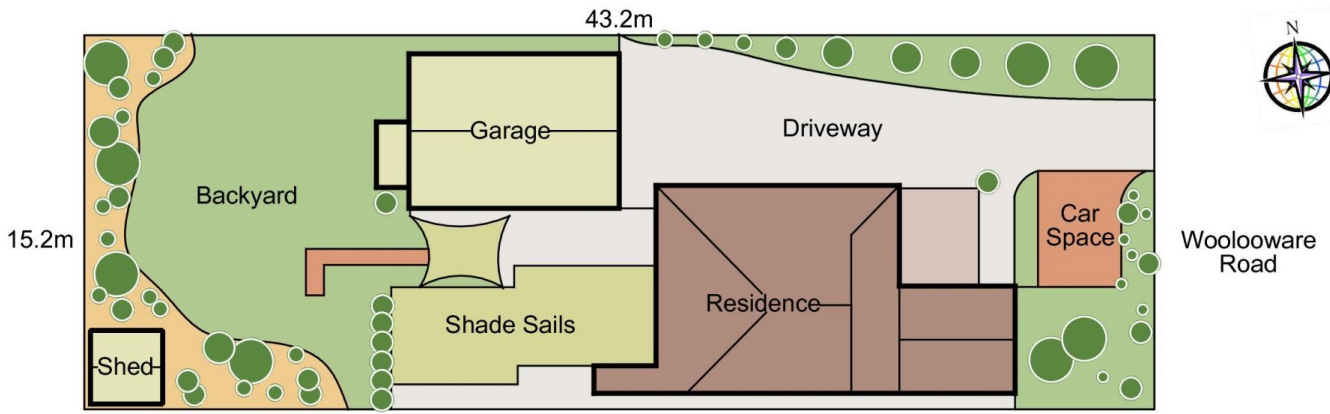
Price : \$ 1,750,000
Land Size : 658 sqm
View : <https://www.crippsandcripps.com.au/sale/nsw/sutherland/woollooware/residential/house/5957241>



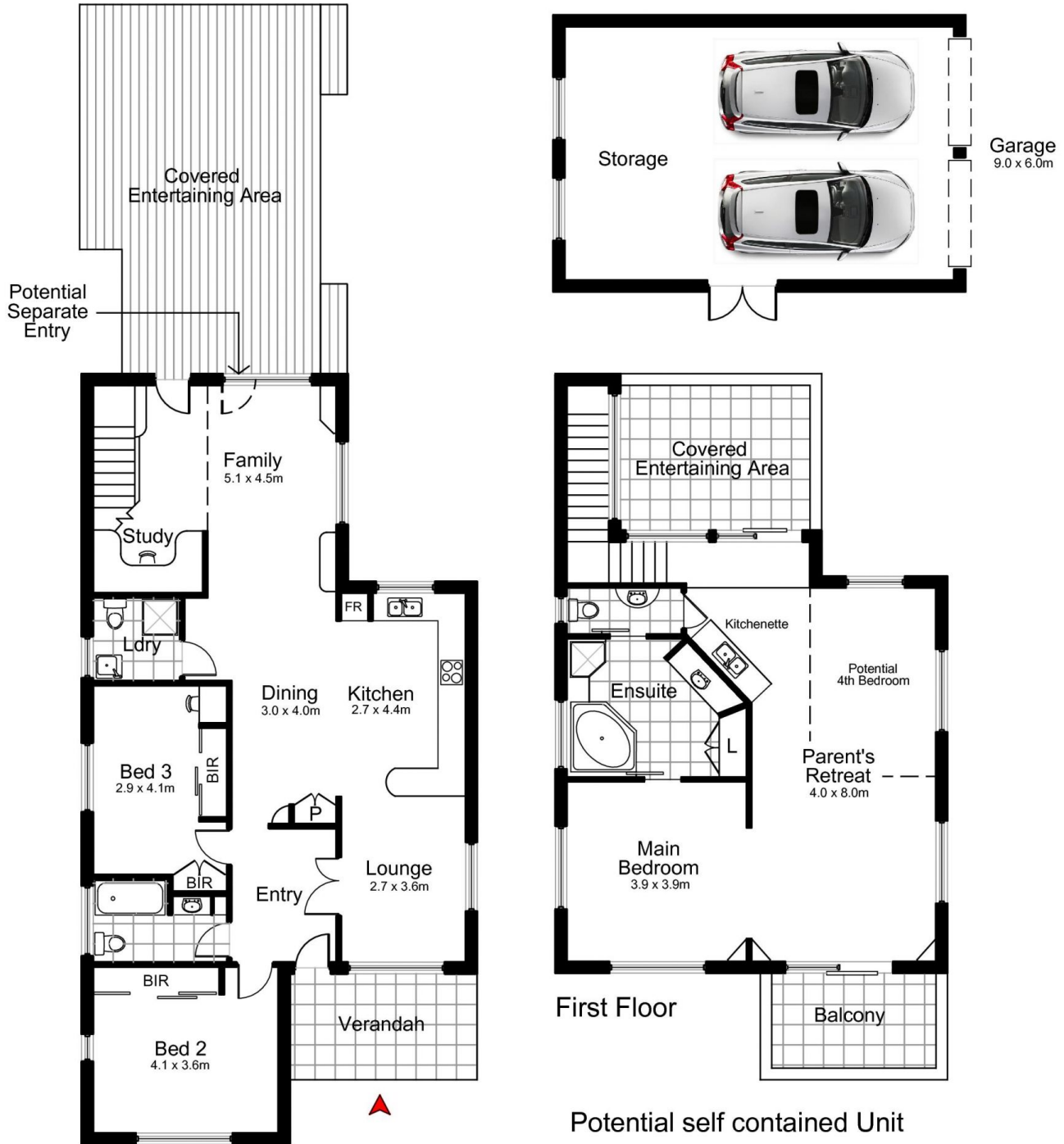
Jason Hawes
 02 9523 6511



Danielle Belshaw
 02 9523 6511



Site Plan



13 Woollooware Road, WOOLLOOWARE

DISCLAIMER: All care has been taken in preparing this floor plan, however the accuracy is not guaranteed and no liability will be accepted for any reliance placed upon it.
Produced by PRODUCT PHOTOGRAPHY STUDIO mob: 0414 697 215 email: mgphoto@people.net.au