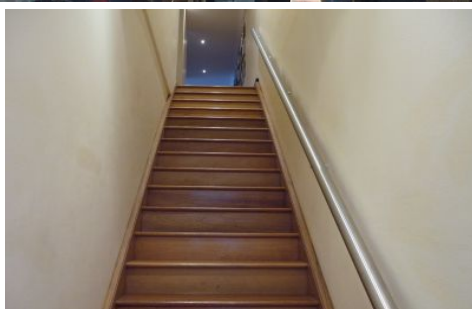
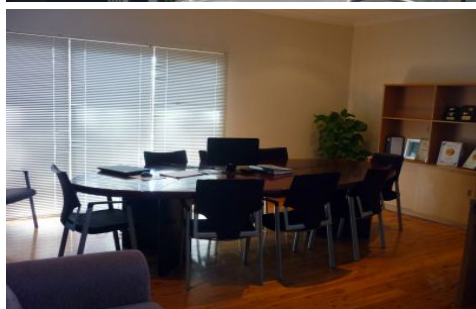


# cripps & cripps

PROPERTY



## 1/96 Gymea Bay Road GYMEA NSW

VERY WELL APPOINTED 147SQM OFFICE  
LOCATED IN BUSY GYMEA VILLAGE  
POLISHED FLOOR BOARDS,  
BOARD ROOM, RECEPTION AREA AND MORE  
OWN AMENITIES  
AIR CONDITIONING  
TWO CAR SPACES  
FRONT AND REAR ACCESS.

**Building Size** : 147 sqm  
**View** : <https://www.crippsandcripps.com.au/lease/nsw/sutherland/gymea/commercial/offices/5957176>



**Tracey Metcalf**  
02 9523 6511