



6/2-6 Koorabel Avenue GYMEA NSW

2 1 2

This freshly painted well-proportioned 2 bedroom apartment is located on the first floor. The complex is being freshly painted and is beautifully maintained.

Blessed with superb north-facing alfresco space and abundant natural light.

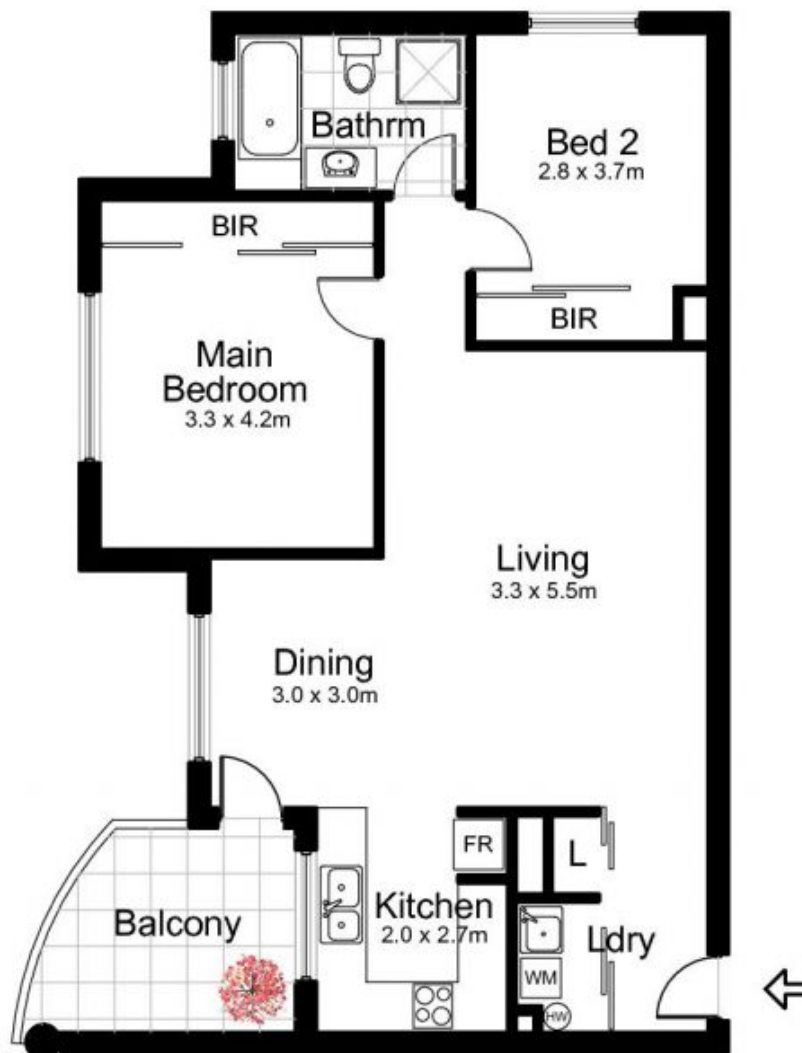
A stone's throw to the vibrant Gymea village, where one can find fine restaurants, numerous coffee shops, supermarkets and specialty stores. Located only minutes to Gymea train station, good schools and lifestyle benefits, would suit those looking to secure a premium position in this immensely popular suburb.

- ? Open Plan Lounge/Dining
- ? Modern kitchen
- ? 2 extra-large bedrooms all with built-ins

View : <https://www.crippsandcripps.com.au/sale/nsw/sutherland/gymea/residential/unit/5957108>



Jenny Duff
02 9523 6511



6/2-6 Koorabel Avenue, GYMEA

DISCLAIMER: All care has been taken in preparing this floor plan however the accuracy is not guaranteed and no liability will be accepted for any reliance placed upon it
Produced by PRODUCT PHOTOGRAPHY STUDIO mob: 0414 697 215 email: mgphoto@people.net.au