



## 23 Copeland Road ENGADINE NSW

3 2 3

This large 3 bedroom family home features modern fixtures and fittings throughout with an elevated leafy district outlook. It is conveniently located close to shops and transport in the popular and family friendly suburb of Engadine.

This property will impress the most astute buyers/invertors, it proudly features;

- Light and bright open plan living and dining areas.
- Functional, centrally located kitchen with dishwasher and glass cooktop.
- 3 large bedrooms, enormous master bedroom with triple mirrored robes
- Ducted air conditioning and polished timber floors throughout
- Large family bathroom with double shower, double basins

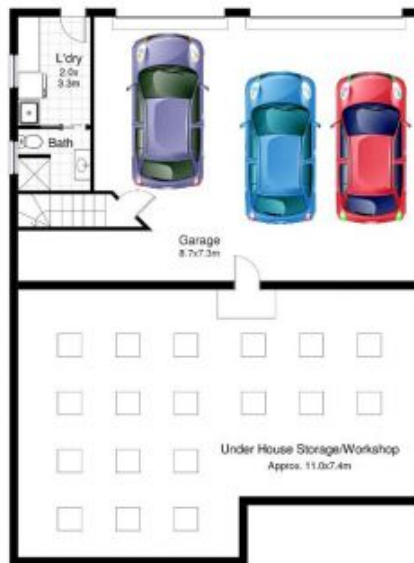
**Price** : \$ 1,075,000  
**Land Size** : 562.5 sqm  
**View** : <https://www.crippsandcripps.com.au/sale/nsw/sutherland/engadine/residential/house/5957077>



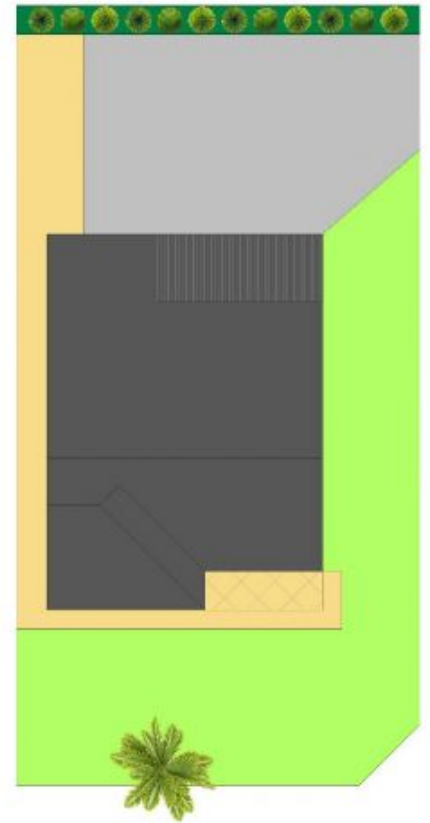
**Jason Hawes**  
**02 9523 6511**



Ground Floor



Lower Floor



## 23 Copeland Road, Engadine

DISCLAIMER: This is for illustrative purposes only. All dimensions are approximate and it does not constitute part of any legal documents.