



1/54 Burraneer Bay Road WOOLLOOWARE NSW

2 1 2

Located at the front in a commanding position is this great 2 bedroom apartment complete with many features that include:

- Open plan design, Modern kitchen with stainless steel appliances
- Modern bathroom with internal laundry facility
- Timber floors and downlights throughout
- Good sized covered verandah off main living area
- Seperate entrance
- Two registered car spaces at your front door
- * PET FRIENDLY *

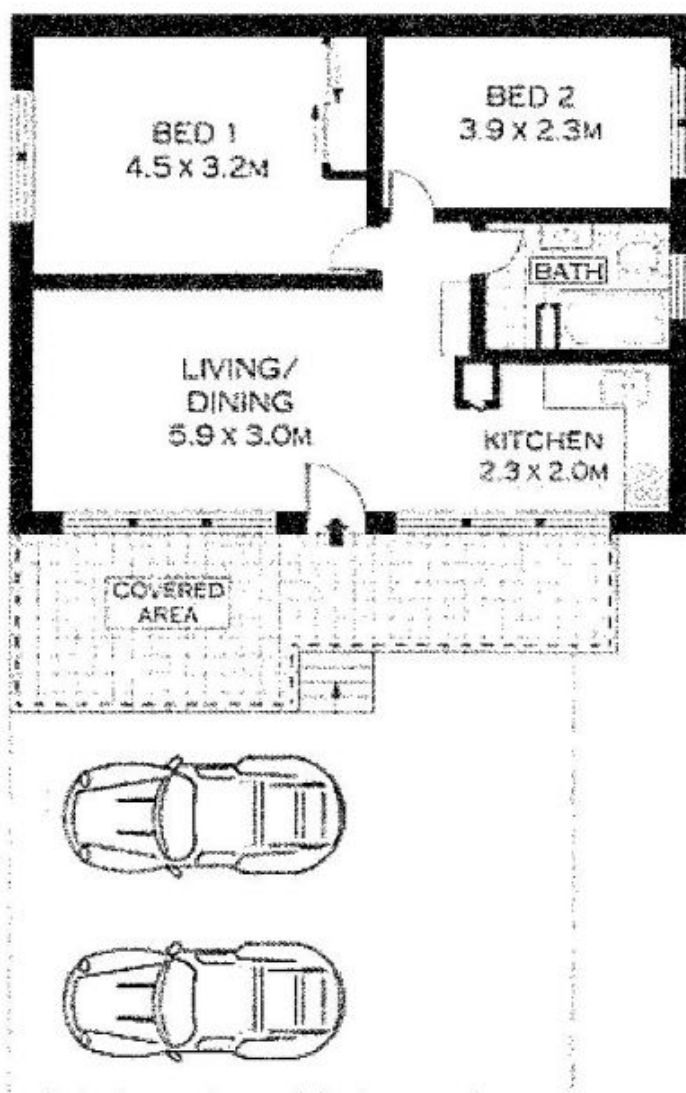
Size: 65 sqm (Internal) + 31 sqm (Carspaces) = 96 sqm (approx)

Outgoings Per Quarter:

Price : \$ 670,000
Building Size : 65 sqm
View : <https://www.crippsandcripps.com.au/sale/nsw/sutherland/woolloomware/residential/apartment/5957009>



Jason Hawes
02 9523 6511



GROUND FLOOR



THIS PLAN IS ONLY A REPRESENTATION OF THE PROPOSED DEVELOPMENT. IT IS NOT A CONTRACT. THE DEVELOPER IS NOT RESPONSIBLE FOR ANY ERRORS OR OMISSIONS. THE DEVELOPER IS NOT RESPONSIBLE FOR ANY CHANGES TO THE PLAN. THE DEVELOPER IS NOT RESPONSIBLE FOR ANY CHANGES TO THE PLAN. THE DEVELOPER IS NOT RESPONSIBLE FOR ANY CHANGES TO THE PLAN.



1 / 54 BURRANEER BAY ROAD

WOOLOOWARE