



7/39-45 Manchester Road GYMEA NSW

3  **1**  **2** 

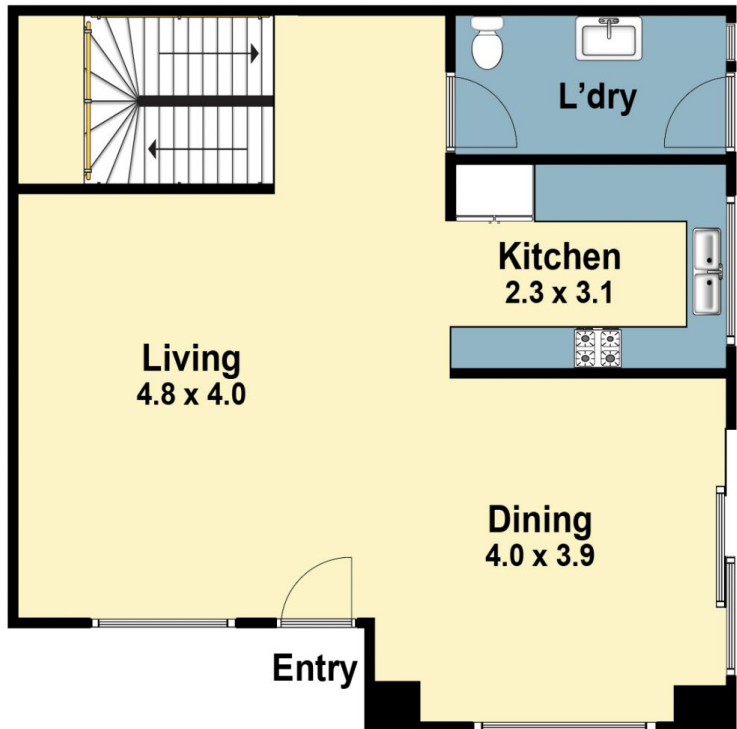
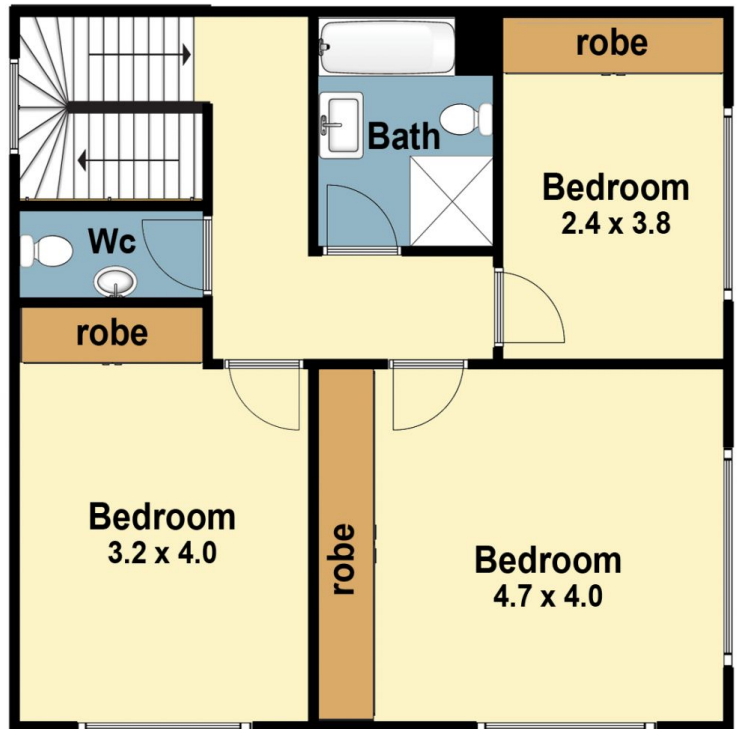
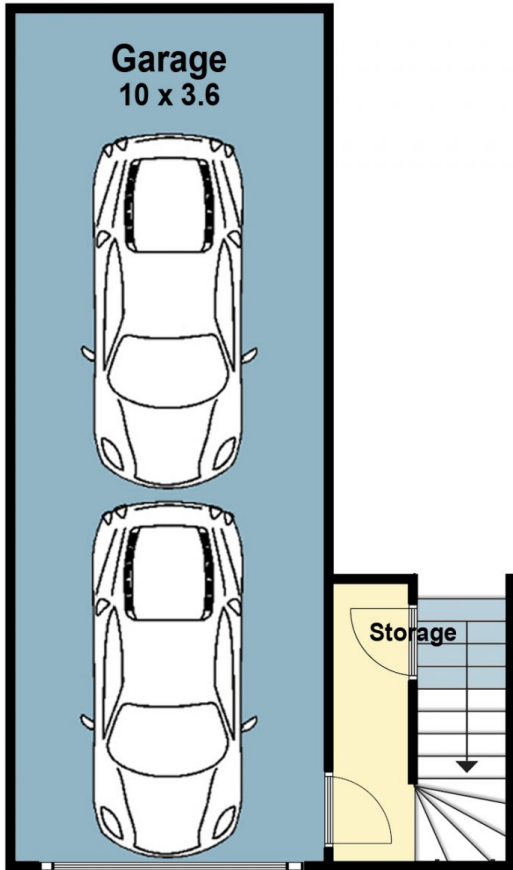
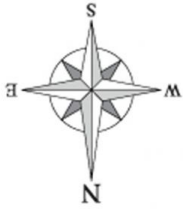
Sensational Townhouse beautifully maintained throughout
Modern bright open plan living with air conditioning
Dining area with access via glass sliding doors, ideal for entertaining
3 generous sized bedrooms with built in robes
Kitchen with plenty of cupboard space, dishwasher, gas hotplates
Child friendly, sunny landscaped garden
Convenient location walk to Gymea Village, transport and schools

Price : \$ 745,000

View : <https://www.crippsandcripps.com.au/sale/nsw/sutherlandland/gymea/residential/townhouse/5956563>



Alice Kelly
02 9523 6511



7/39 Manchester Road, Gymea

DISCLAIMER: PLANS SHOWN ARE FOR PRESENTATION PURPOSE AND ARE NOT PART OF ANY LEGAL DOCUMENT. ALL MEASUREMENTS AND FIGURES ARE APPROXIMATE.