



**58/99-111 Karimbla Road MIRANDA NSW**

2  1  1 

Easy ground floor living with direct access to private, paved courtyard

Very neat open plan living, separate dining or 3rd bedroom

Nice sized kitchen overlooks the living area, internal laundry

Currently leased to February 2014

Such a convenient location, short walk to Westfield Shopping Centre

Quarterly Outgoings:

Strata Levies \$705.71 approx

Council Rates \$215.00 approx

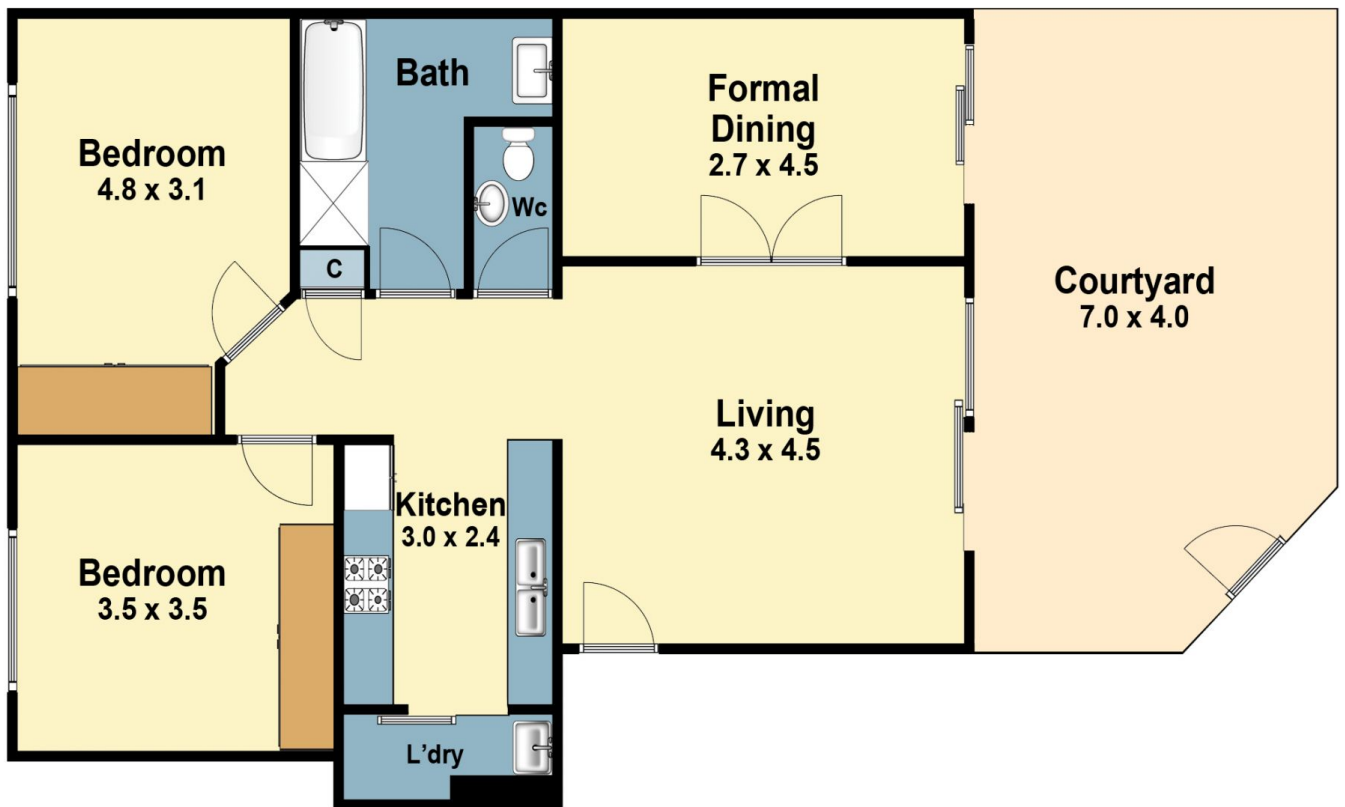
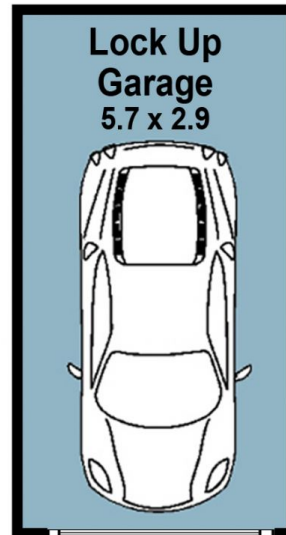
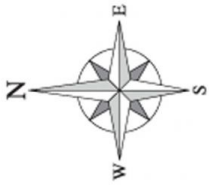
Water Rates \$156.55 approx

**Price** : \$ 440,000

**View** : <https://www.crippsandcripps.com.au/sale/nsw/sutherlandland/miranda/residential/unit/5956555>



**Alice Kelly**  
02 9523 6511



## 58/99-111 Karimbla Road, Miranda

DISCLAIMER: PLANS SHOWN ARE FOR PRESENTATION PURPOSE AND ARE NOT PART OF ANY LEGAL DOCUMENT. ALL MEASUREMENTS AND FIGURES ARE APPROXIMATE.