



28/10-14 Warburton Street GYMEA NSW

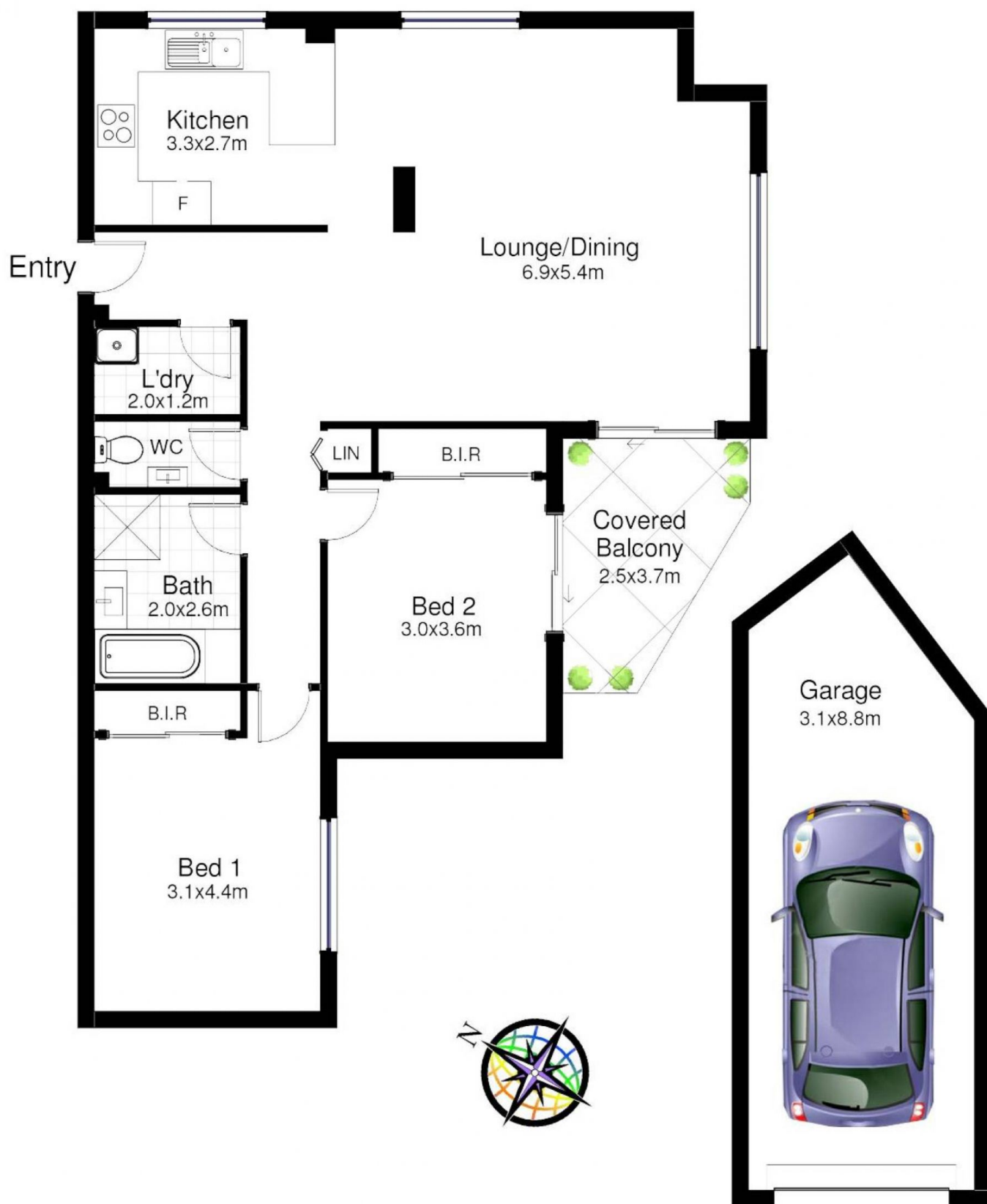
2 1 1

- Stylishly appointed, light and airy, first floor
 - Sunny NE open plan living with balcony access
 - Queen size bedrooms with built in robes
 - Modern kitchen with dishwasher, breakfast bar
 - Freshly painted, air conditioning throughout
 - Stone's throw to GyMEA Village cafes, station
 - Large lock up garage, such a fabulous location
 - Available NOW
- No pets No smoking sorry

View : <https://www.crippsandcripps.com.au/lease/nsw/sutherland/gyMEA/residential/unit/5956538>



Jordan Hyams
02 9523 6511



28/10-14 Warburton Steet, Gymea

DISCLAIMER: All care has been taken in preparing this floor plan, however the accuracy is not guaranteed and no liability will be accepted for any reliance placed upon it.

Produced by PRODUCT PHOTOGRAPHY STUDIO mob: 0414 697 215 email: mgphoto@people.net.au