



**28/10-14 Warburton Street GYMEA NSW**

2  1  1 

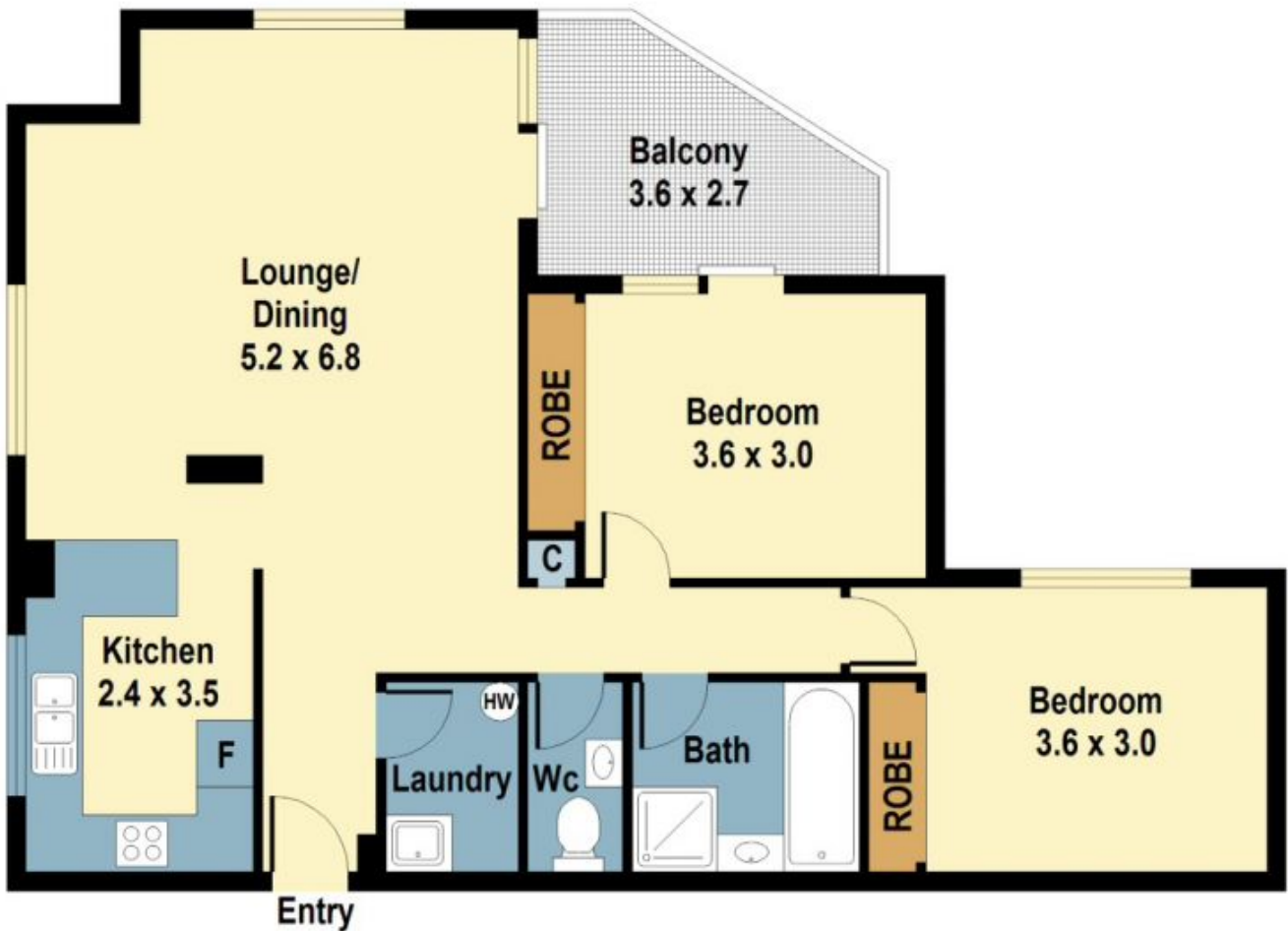
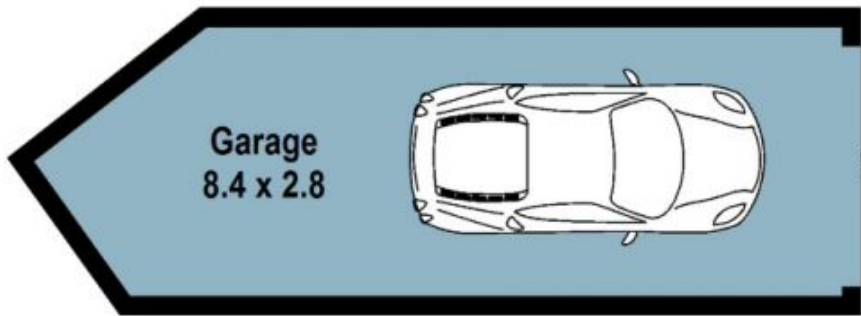
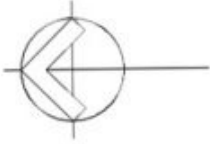
- \* Pristine, modern, and not a cent to spend!
- \* Bright open plan living, spacious bedrooms with built ins, main with balcony access
- \* Air conditioning throughout, kitchen with stainless steel appliances
- \* Covered Balcony great for entertaining, stroll to Gymea Village
- \* Single lock up Garage 25m<sup>2</sup>; Unit size 94m<sup>2</sup>, Total 119m<sup>2</sup>
- \* Strata \$470pq, Council Rates \$445pq; Water Rates; \$156

All prices approximate

**View** : <https://www.crippsandcripps.com.au/sale/nsw/sutherland/gymea/residential/unit/5956517>



**Alice Kelly**  
02 9523 6511



## 28/10 Warburton Street, Gymea

DISCLAIMER: PLANS SHOWN ARE FOR PRESENTATION PURPOSE AND ARE NOT PART OF ANY LEGAL DOCUMENT. ALL MEASUREMENTS AND FIGURES ARE APPROXIMATE.