






8/69-73 Manchester Road GYMEA NSW

3  **2**  **2** 

This immaculately presented townhouse offers stylish, low maintenance living and the convenience of just a short stroll to the lively Gymea Village and station.

This residence provides three generous bedrooms with built-in wardrobes. The master features a walk-in robe, en-suite bathroom and air-conditioning.

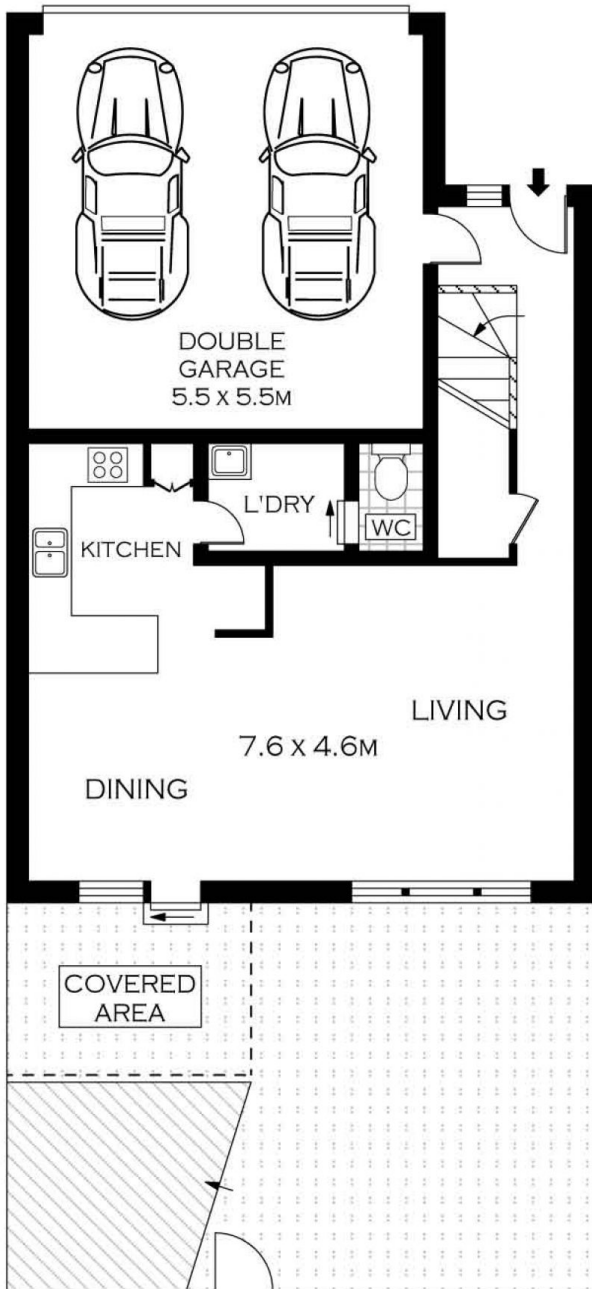
The modern kitchen features a double pantry, stainless steel appliances, a double sink, and granite bench tops.

The combined lounge and dining area is bright and spacious, this leads out to a private paved courtyard, perfect for entertaining guests.

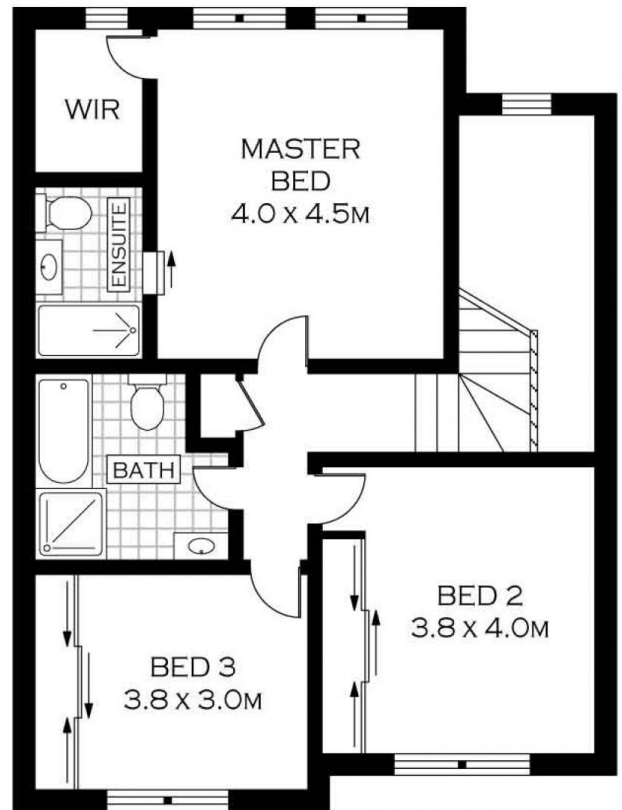
Other features of the property include a large double lock up garage with internal access, under stair storage, timber flooring, air-conditioning in the living and main bedroom.

View : <https://www.crippsandcripps.com.au/sale/nsw/sutherlandland/gymea/residential/townhouse/5956436>

Total Area 198m²



GROUND FLOOR



FIRST FLOOR



PLANS SHOWN ONLY INDICATIVE OF LAYOUT. DIMENSIONS ARE APPROXIMATE.
Floor plans by www.realestatemarketingaustralia.com.au
Ref. No: 5782



8/63-79 MANCHESTER ROAD

GYMEA