



## 30 Crookwell Ave MIRANDA NSW

4 2 1

Situated in a quiet tree lined street and occupying an attractive 748sqm of land, this fully renovated home with high quality finishes, offers two separate living areas, with an easy living floor plan. Its sought-after family setting is placed in a highly desirable and convenient location in Miranda South, bordering Yowie Bay.

**Land Size** : 748 sqm  
**View** : <https://www.crippsandcripps.com.au/sale/nsw/sutherland/miranda/residential/house/5954198>

The stylish family home is completely rendered, freshly painted throughout and presents a modern design. All of the hard work has been done, with no expense spared.

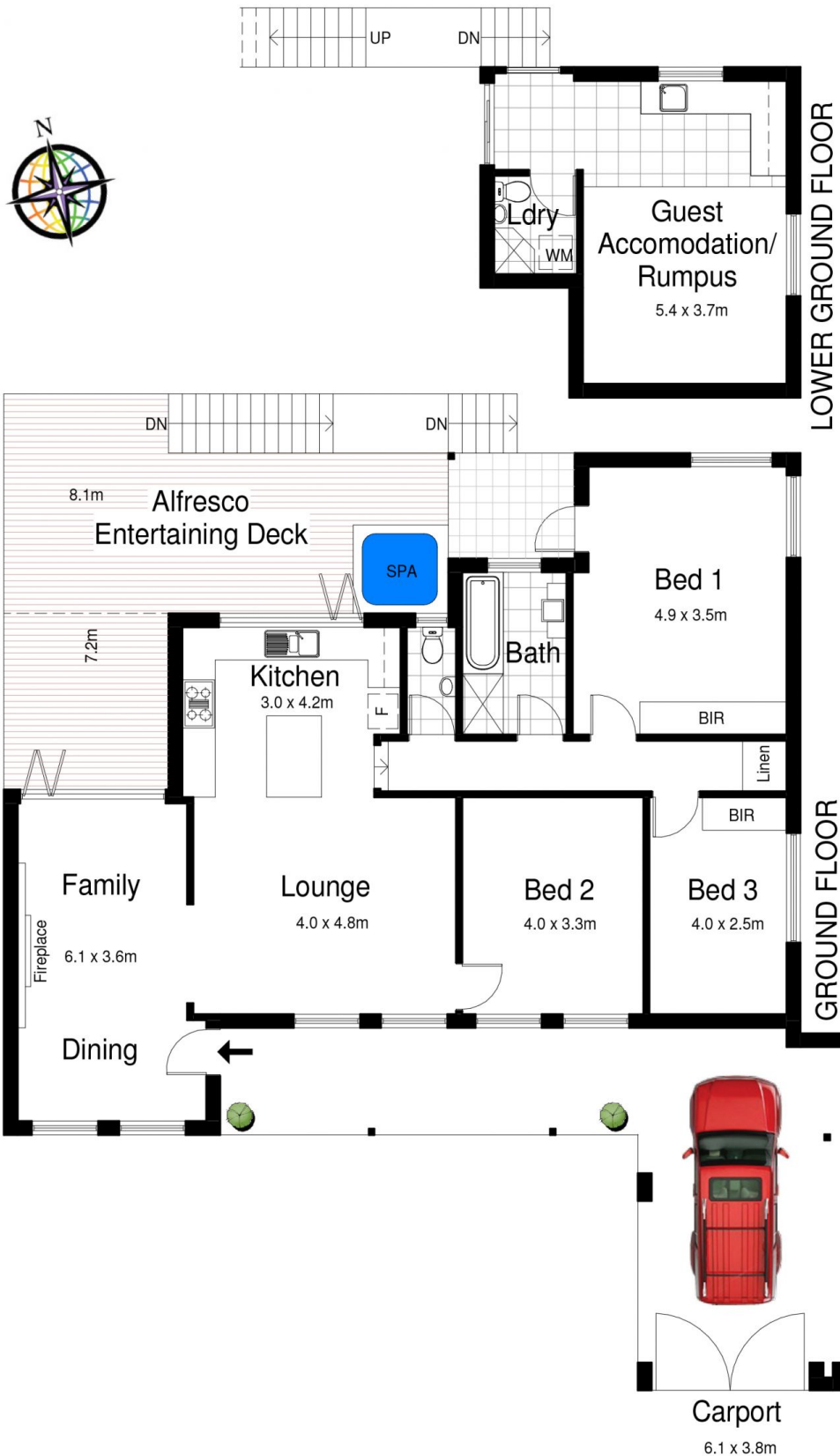
This double brick home features:

Four generous sized bedrooms with built in robes and balcony.

Separate spacious lounge and dining areas with energy saving down lights throughout and Jet Master fireplace.



**Jason Hawes**  
02 9523 6511



## 30 Crookwell Avenue, MIRANDA

DISCLAIMER: All care has been taken in preparing this floorplan, however the accuracy is not guaranteed and no liability will be accepted for any reliance placed upon it  
 Produced by PRODUCT PHOTOGRAPHY STUDIO mob: 0414 697 215 email: mgphoto@people.net.au



## 30 Crookwell Avenue, MIRANDA

DISCLAIMER: All care has been taken in preparing this floorplan, however the accuracy is not guaranteed and no liability will be accepted for any reliance placed upon it  
 Produced by PRODUCT PHOTOGRAPHY STUDIO mob: 0414 697 215 email: mgphoto@people.net.au