



b9/14-16 Burraneer Bay Road CRONULLA NSW

4 4 7

Overlooking the head of Gunnamatta Bay and just a short stroll to the Marina and Cronulla Central is this fantastic split level 4 bedroom penthouse.

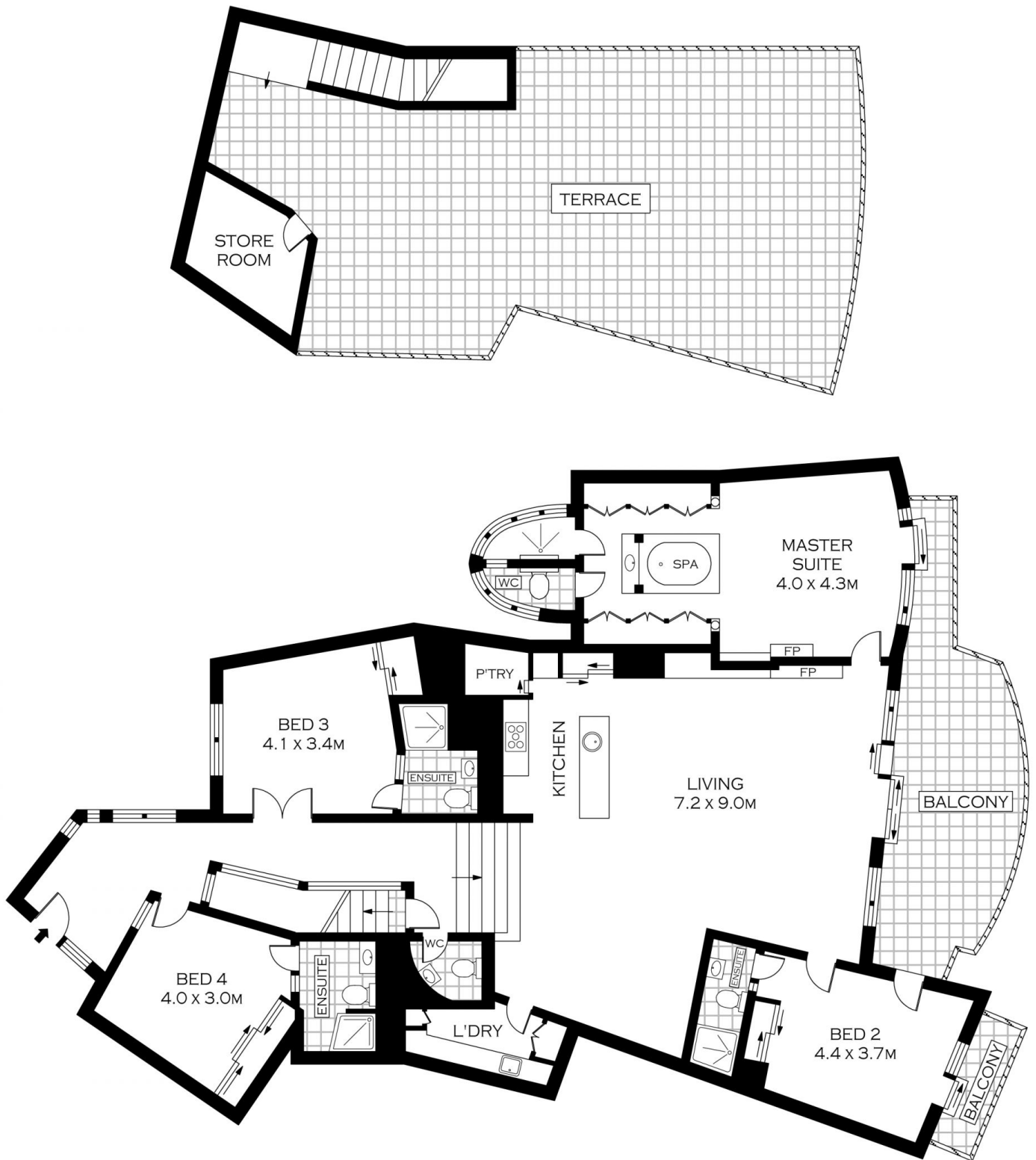
View : <https://www.crippsandcripps.com.au/sale/nsw/sutherland/cronulla/residential/unit/5954140>

The penthouse has a wonderful sundrenched entertainers deck with a jacuzzi and encompasses the panoramic view up and around Gunnamatta Bay, the master bedroom is fitted out with a lovely fireplace for those cold winters nights and for the summer nights you can cool off in the large spa bath, bedrooms 2, 3 and 4 have their own ensuite, built-in wardrobes and ducted air conditioning. The kitchen has marble benchtops and splashbacks throughout with timber cupboards, the lounge dining is grand and has beautiful timber floor boards, oh, did i mention the 8 individual garages with this unit!



Brett Cripps
02 9523 6511

There are many more features to this lovely Penthouse and

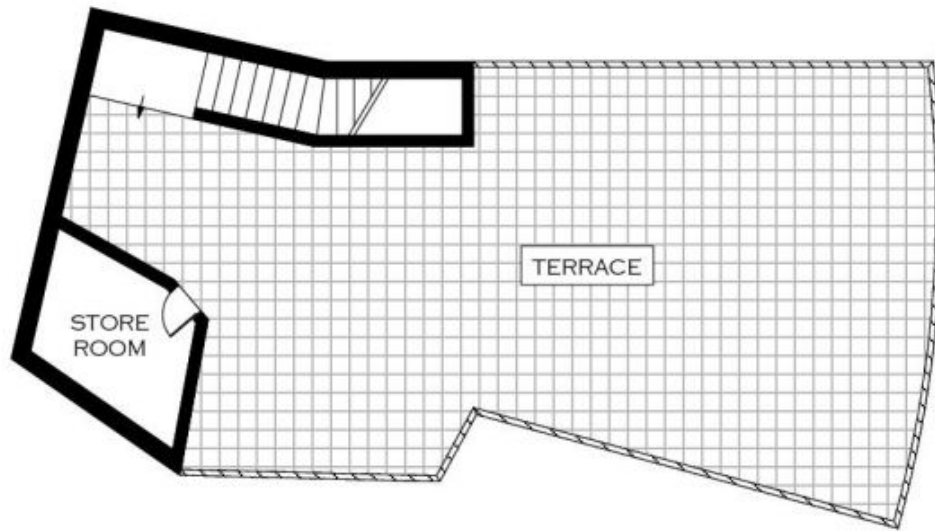


PLANS SHOWN ONLY INDICATIVE OF LAYOUT. DIMENSIONS ARE APPROXIMATE.
 Floor plans by www.realestatemarketingaustralia.com.au
 Ref. No: 7049

cripps & cripps
 PROPERTY

B9/14-16 BURRANEER BAY ROAD

CRONULLA



SCALE (METRES)

PLANS SHOWN ONLY INDICATIVE OF LAYOUT. DIMENSIONS ARE APPROXIMATE.
Floor plans by www.realestatemarketingaustralia.com.au
Ref. No: 7049

cripps & cripps
PROPERTY

B9/ 14-16 BURRANEER BAY ROAD

CRONULLA