



6/23 Hotham Road GYMEA NSW

3  2  2 

Be impressed as you enter this beautifully presented, well-proportioned and superbly maintained townhouse. Only 3.5 years old it features pristine interiors and polished tiled floors with a stylish colour scheme throughout and beautiful water feature in your private courtyard.

View : <https://www.crippsandcripps.com.au/sale/nsw/sutherland/gyMEA/residential/townhouse/5954132>

This home is ideal for easy-care entertaining and casual living with spacious open living areas leading to an intimate outdoor courtyard. Blessed with superb North facing alfresco space, stylish finishes and an abundance of natural light.

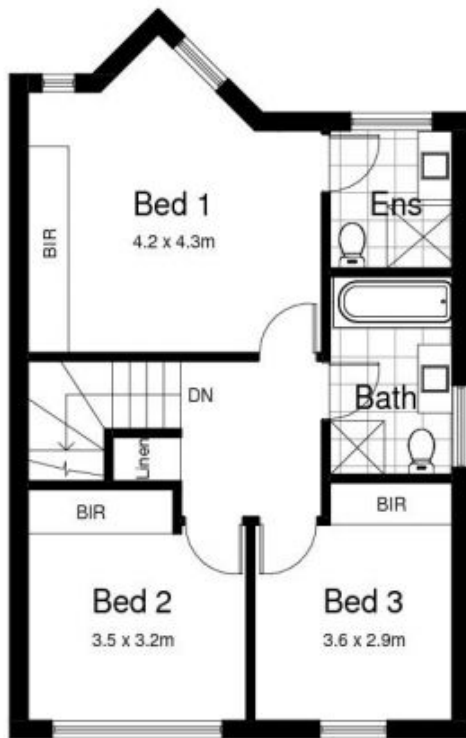


Jenny Duff
02 9523 6511

Located only a stones throw to the vibrant GyMEA village, where one can find fine restaurants, numerous coffee shops, supermarkets, good schools and lifestyle benefits, would suit those looking to secure a premium position in this immensely popular suburb.



LOWER GROUND LEVEL



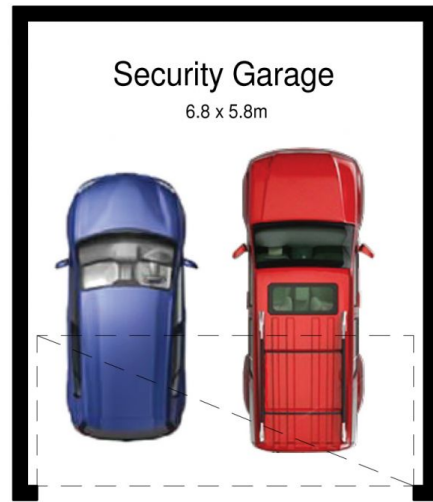
UPPER LEVEL



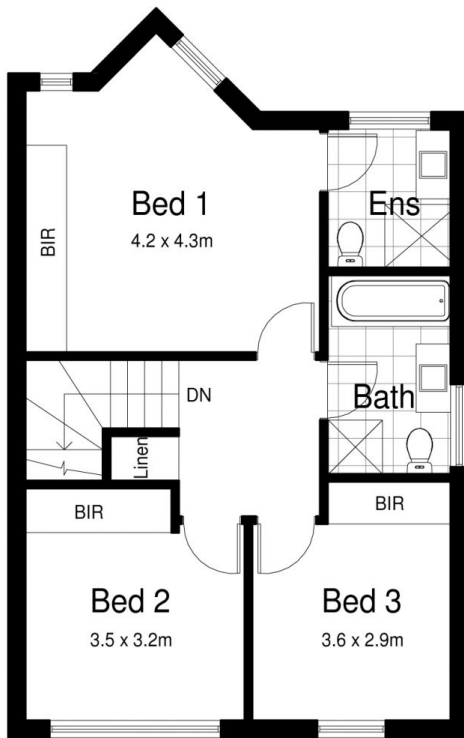
GROUND LEVEL

6/23 Hotham Road, GYMEA

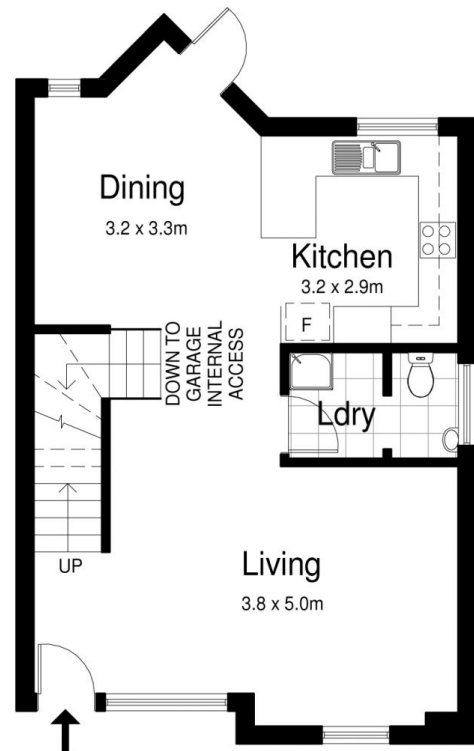
DISCLAIMER: All care has been taken in preparing this floorplan, however the accuracy is not guaranteed and no liability will be accepted for any reliance placed upon it
Produced by PRODUCT PHOTOGRAPHY STUDIO mob: 0414 697 215 email: mgphoto@people.net.au



LOWER GROUND LEVEL



UPPER LEVEL



GROUND LEVEL

6/23 Hotham Road, GYMEA

DISCLAIMER: All care has been taken in preparing this floorplan, however the accuracy is not guaranteed and no liability will be accepted for any reliance placed upon it
Produced by PRODUCT PHOTOGRAPHY STUDIO mob: 0414 697 215 email: mgphoto@people.net.au