



14 Loch Lomond Crescent BURRANEER NSW

5  3  2 

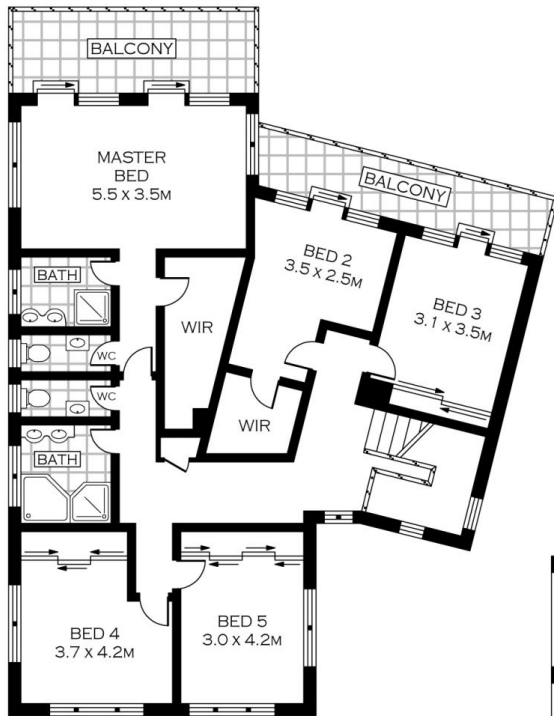
Imagine waking up and stretching on your own private balcony and suddenly being immersed in 180 degree panoramic views of the Port Hacking, picture yourself paddling over to fishermans bay or out to Jibbon and back, what a way to start your day. Quality features include:

5 bedrooms, main has ensuite, walk in robe, separate toilet and private balcony, beds 2, 3, 4, 5 all have built-ins, 2 & 3 have panoramic views and a balcony. All bedrooms are serviced by reverse cycled ducted air conditioning.

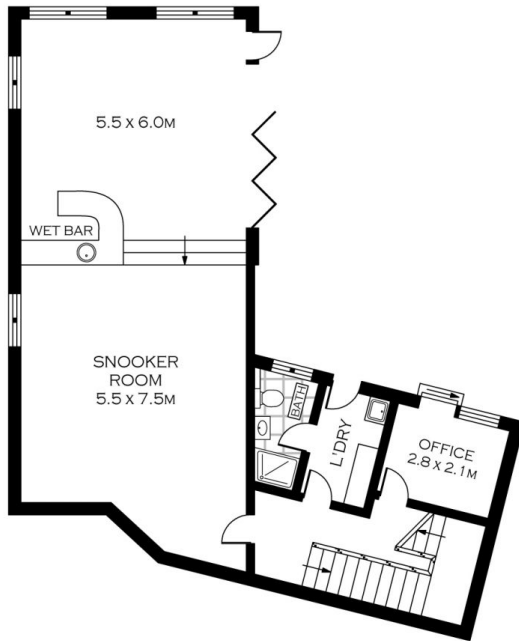
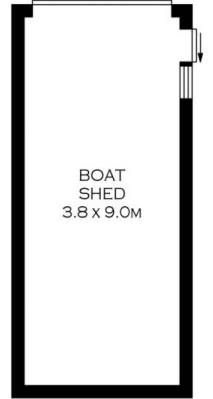
Main bathroom with large corner spa bath, semi frameless shower recess and a double bowl vanity unit with overhead mirrored cupboards. There is also a separate toilet, laundry chute and intercom for ease of communication.

Kitchen - beautiful 40mm granite benchtops with

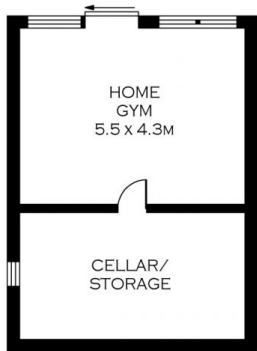
Land Size : 974 sqm
View : <https://www.crippsandcripps.com.au/sale/nsw/sutherland/burraneer/residential/house/5954123>



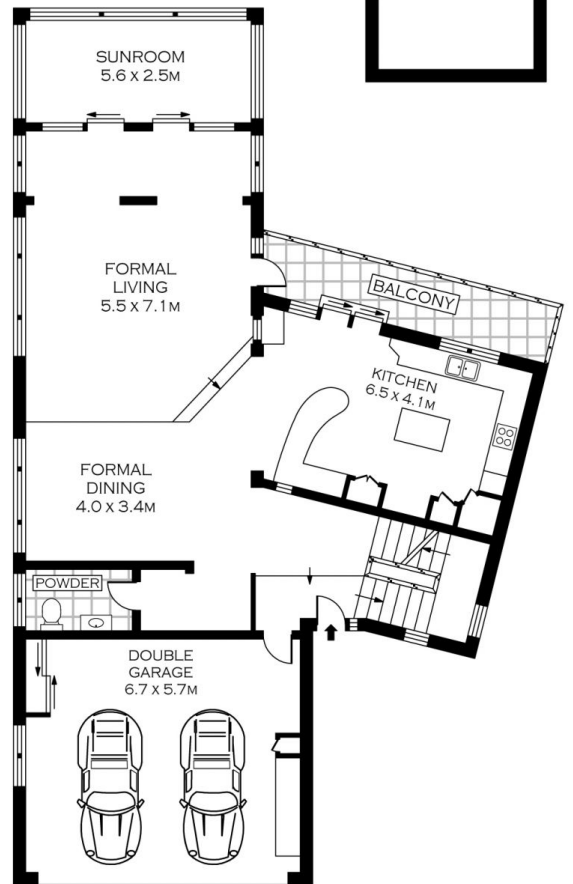
FIRST FLOOR



ENTERTAINING LEVEL



BOTTOM LEVEL



GROUND FLOOR



SCALE (METRES)

PLANS SHOWN ONLY INDICATIVE OF LAYOUT. DIMENSIONS ARE APPROXIMATE.
 Floor plans by www.realestatemarketingaustralia.com.au
 Ref. No. 6813



14 LOCH LOMOND CRESCENT

BURRANEER