



## BURRANEER

4 2 2

Peacefully situated in a sought-after enclave, capturing breathtaking water views over Burraneer Bay, this as-new (2 years old) family home designed to provide a luxurious yet highly functional setting for both indoor/outdoor entertaining. Bright and breezy interiors and oriented to the north to ensure the warmth of natural light throughout the home, combined with a highly desirable location to create the ideal home.

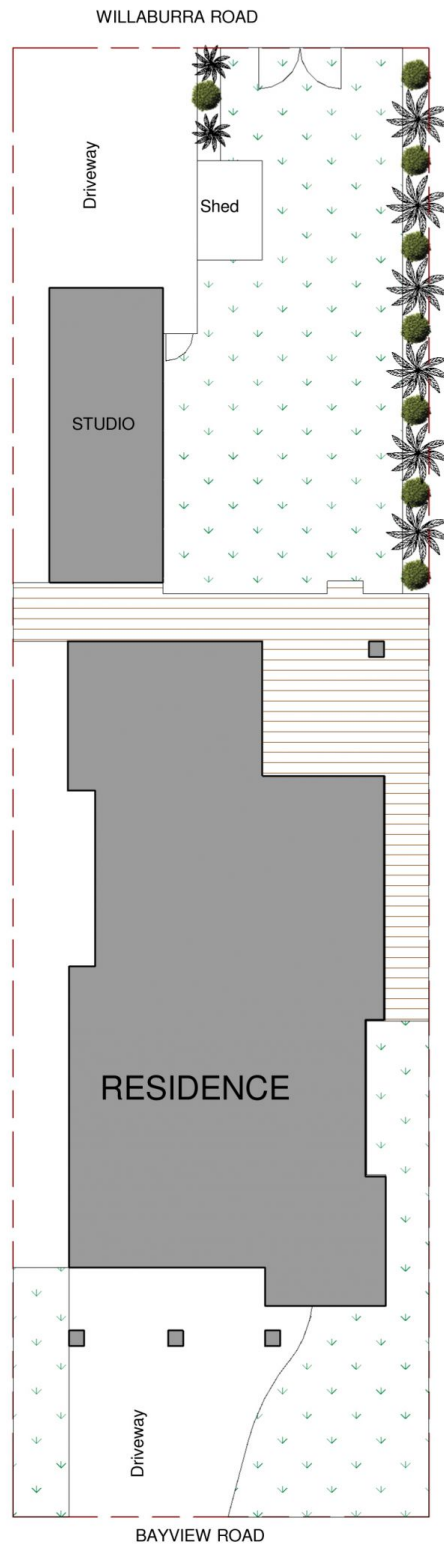
Balancing comfort, style and substance over two well-proportioned levels. Open plan interiors and high ceilings create an invigorating and uplifting living experience, while the cleverly crafted layout provides the ultimate in modern living and grand scale entertaining. The home boasts a choice of formal and casual areas that naturally integrate with the outdoors perfect for BBQ's and entertaining your friends.

**Price** : \$ 1,650,000

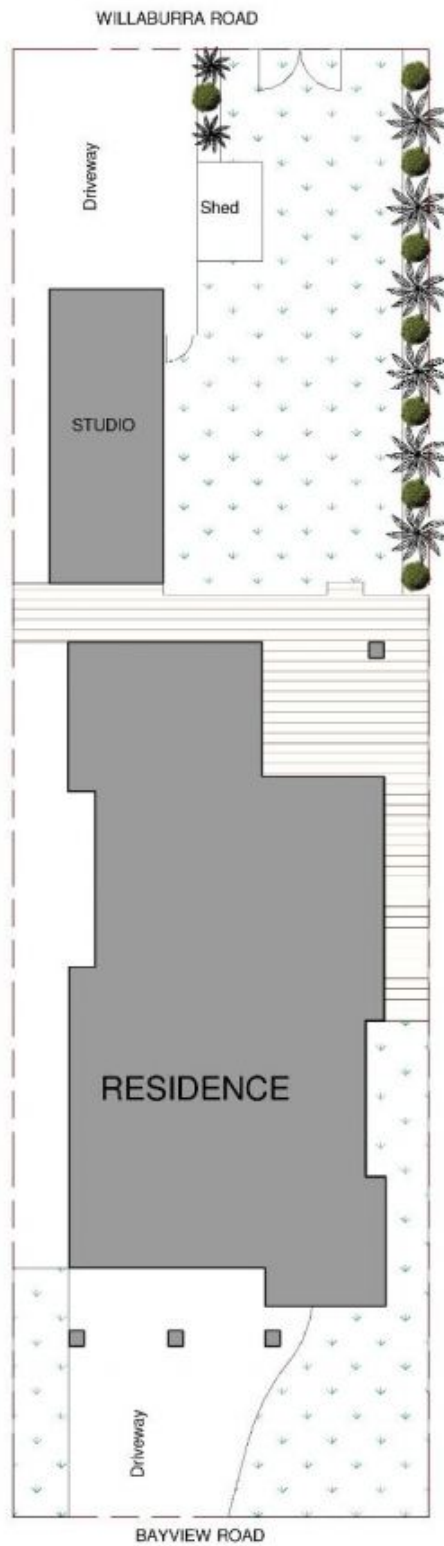
**View** : <https://www.crippsandcripps.com.au/sale/nsw/sutherland/burraneer/residential/house/5954089>



**Jenny Duff**  
02 9523 6511



DISCLAIMER: All care has been taken in preparing this floorplan, however the accuracy is not guaranteed and no liability will be accepted for any reliance placed upon it  
 Produced by PRODUCT PHOTOGRAPHY STUDIO mob: 0414 697 215 email: mgphoto@people.net.au



DISCLAIMER: All care has been taken in preparing this floorplan, however the accuracy is not guaranteed and no liability will be accepted for any reliance placed upon it  
Produced by PRODUCT PHOTOGRAPHY STUDIO mob: 0414 697 215 email: mgphoto@people.net.au