



2/44-48 Hotham Road GYMEA NSW

3  **2**  **2** 

Be impressed as you enter this beautifully presented, well-proportioned and superbly maintained townhouse.

This home is ideal for easy-care entertaining with spacious open living areas leading to an intimate outdoor courtyard. Blessed with superb north-facing alfresco space, stylish finishes and abundant natural light.

A stone's throw to the vibrant Gymea village, where one can find fine restaurants, numerous coffee shops, supermarkets and specialty stores. Located only minutes to Gymea train station, good schools and lifestyle benefits, would suit those looking to secure a premium position in this immensely popular suburb.

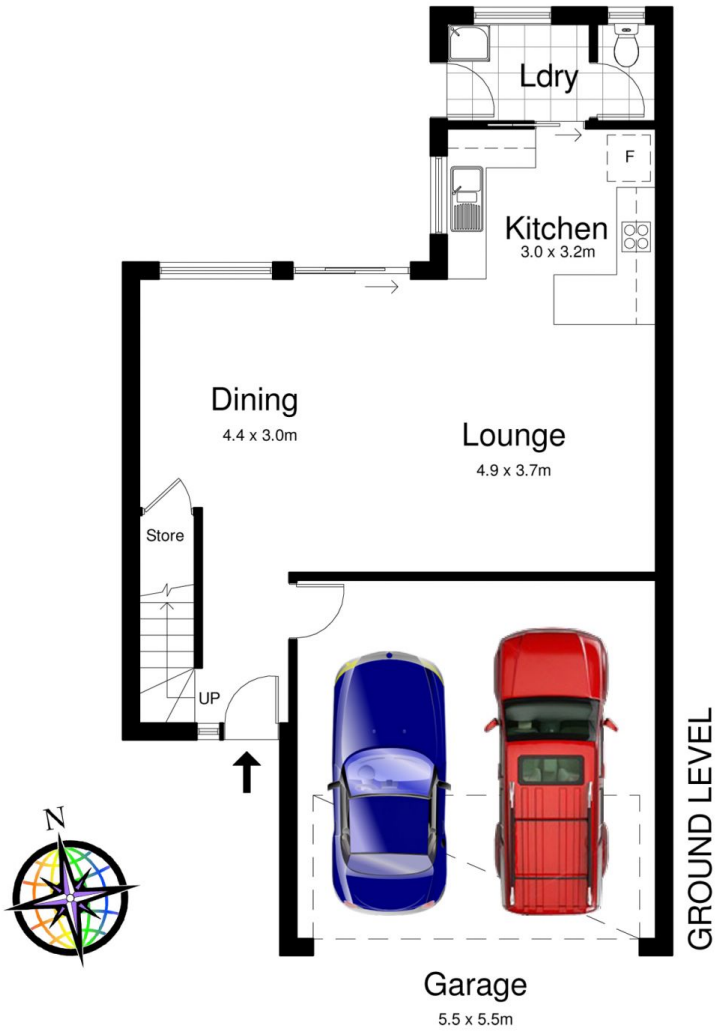
Impressive on the outside & captivating on the inside, this home is a sheer delight to inspect! Features include:

Price : \$ 671,500

View : <https://www.crippsandcripps.com.au/sale/nsw/sutherland/gymea/residential/townhouse/5954062>

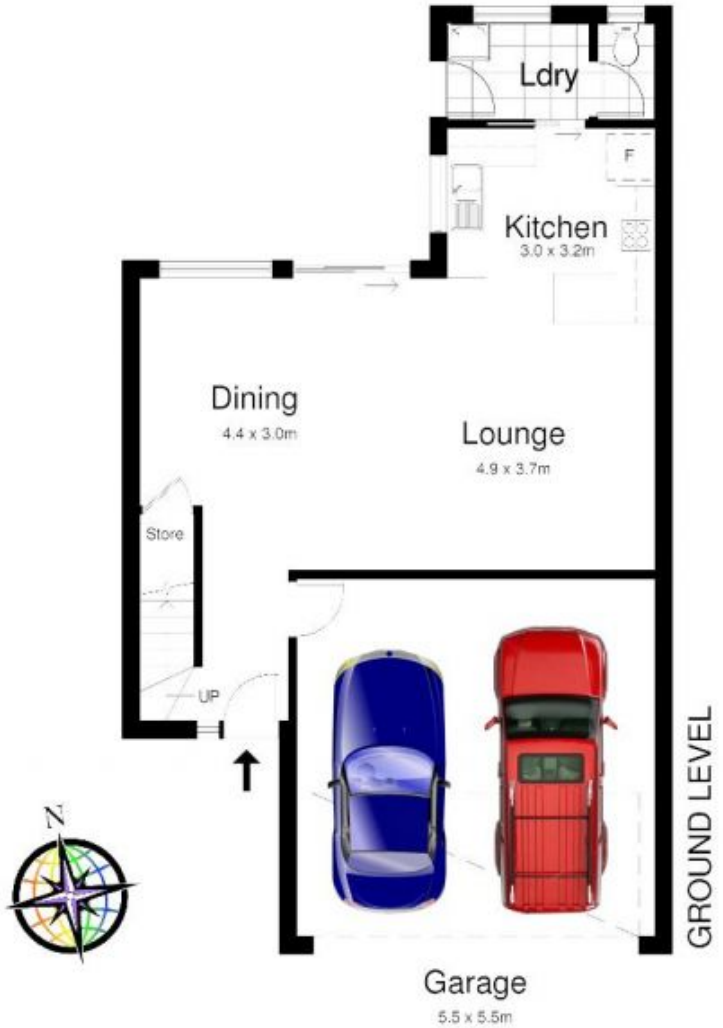


Jenny Duff
02 9523 6511



2/48 Hotham Road, GYMEA

DISCLAIMER: All care has been taken in preparing this floor plan, however the accuracy is not guaranteed and no liability will be accepted for any reliance placed upon it
 Produced by PRODUCT PHOTOGRAPHY STUDIO mob: 0414 697 215 email: mgphoto@people.net.au



2/48 Hotham Road, GYMEA

DISCLAIMER: All care has been taken in preparing this floor plan, however the accuracy is not guaranteed and no liability will be accepted for any reliance placed upon it
 Produced by PRODUCT PHOTOGRAPHY STUDIO mob: 0414 697 215 email: mgphoto@people.net.au