

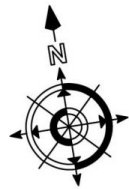
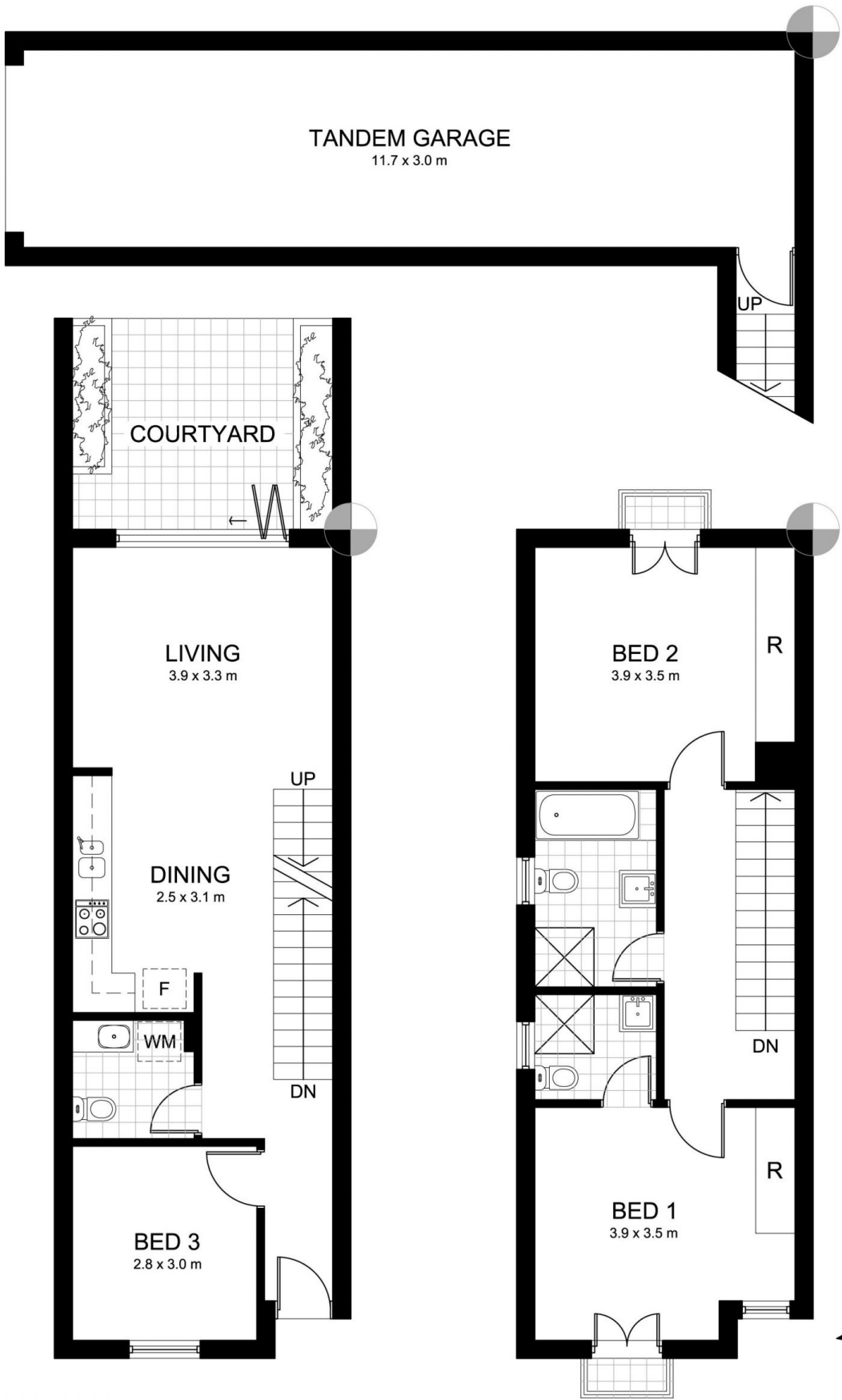
14/52-56 Manchester Road GYMEA NSW

3  **2**  **2** 

- * Modern sophisticated light filled 3 bedroom townhouse main with ensuite
- * Open plan lounge and dining with stylish Caesar Stone kitchen
- * Polished floors with bi-fold doors opening to North facing low maintenance courtyard
- * Double lock up garage with internal access
- * Perfectly positioned close to transport, schools and all that Gymea Village has to offer

Price : \$ 590,000

View : <https://www.crippsandcripps.com.au/sale/nsw/sutherland/gymea/residential/townhouse/5953826>



**Townhouse 14, 52-56
Manchester Road, GYMEA**

DISCLAIMER: All care has been taken in preparing this floor plan, however the accuracy is not guaranteed and no liability will be accepted for any reliance placed upon it
Produced by PRODUCT PHOTOGRAPHY STUDIO
mob: 0414 697 215 email: mgphoto@people.net.au