



6/9-11 Paddison Avenue GYMEA NSW

3 2 2

Make this exquisite townhouse your new home..

State of the art building situated in the heart of Gymea, this three bedroom townhouse offers everything you dream of.

View : <https://www.crippsandcripps.com.au/lease/nsw/sutherland/gymea/residential/townhouse/5953819>

Downstairs offering:

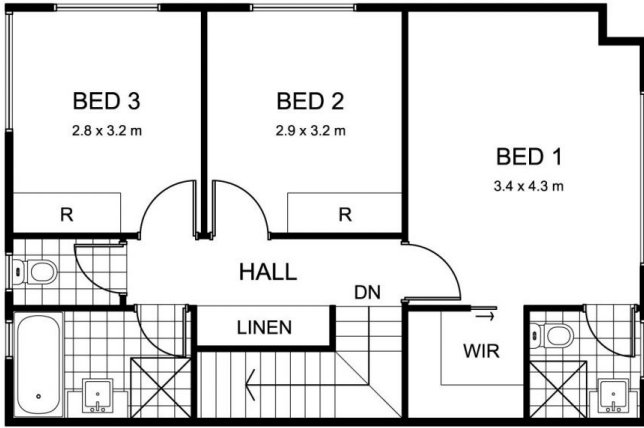
Open plan kitchen, 40mm Caesar stone bench tops, smeg stainless steel gas appliances, loads of cupboards for storage & dishwasher.

Open plan lounge/dining with polished timber floors

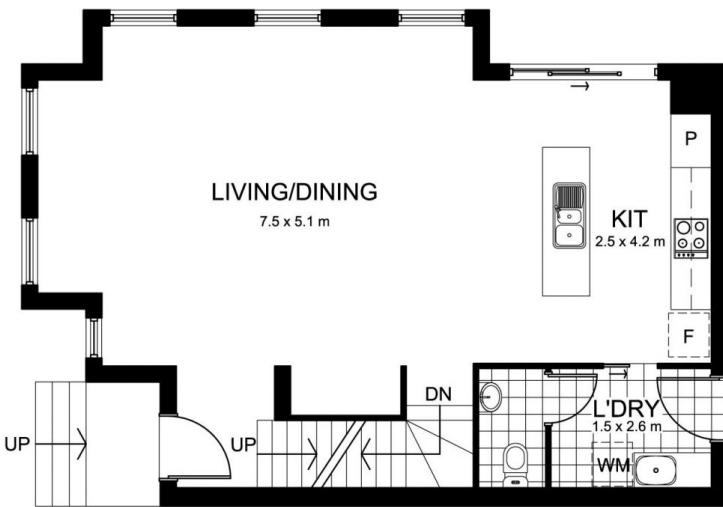
Internal laundry with w.c

Large paved entertainers courtyard

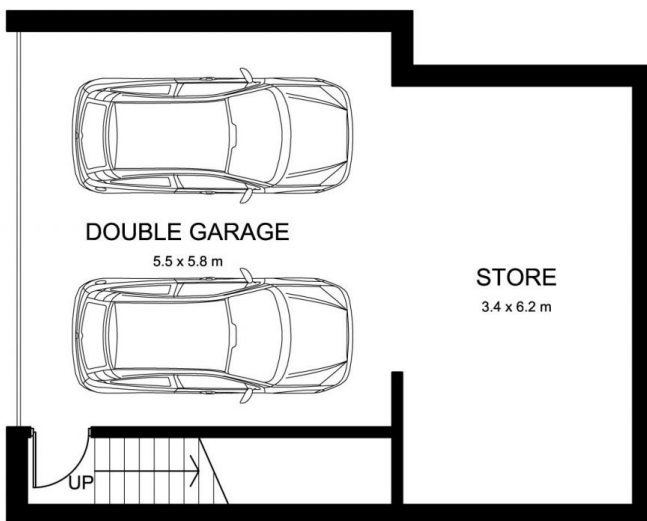
Internal access to amazing size remote lockup garage + workshop/storage



UPPER LEVEL



ENTRY LEVEL



GARAGE LEVEL



Townhouse 6, 9-11
Paddison Ave, Gymea

DISCLAIMER: All care has been taken in preparing this floor plan, however the accuracy is not guaranteed and no liability will be accepted for any reliance placed upon it
Produced by PRODUCT PHOTOGRAPHY STUDIO
mob: 0414 697 215 email: mgphoto@people.net.au