

2/52-56 Manchester Road GYMEA NSW

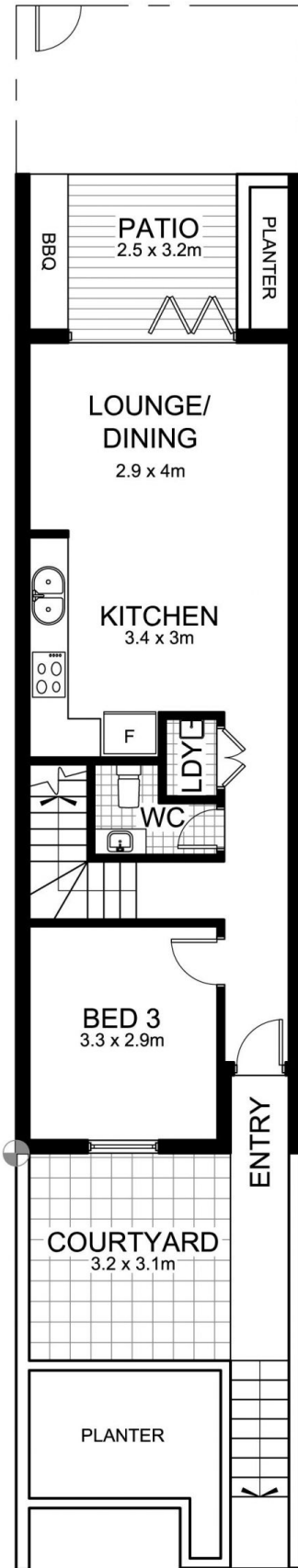
3  2  2 

Perfectly positioned close to Gymea Shopping Village, this contemporary style four year old 3 bedroom townhouse offers easy entertaining and sophisticated living.

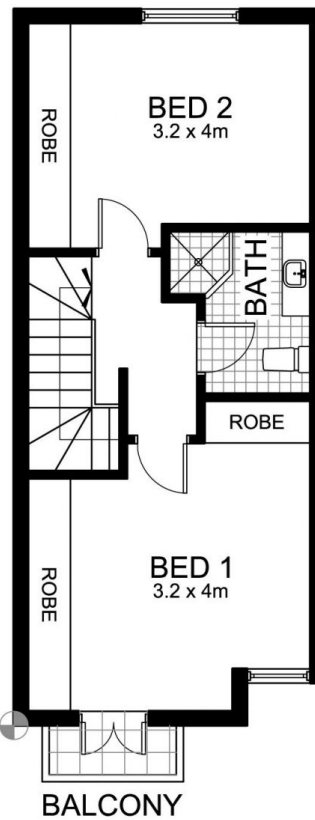
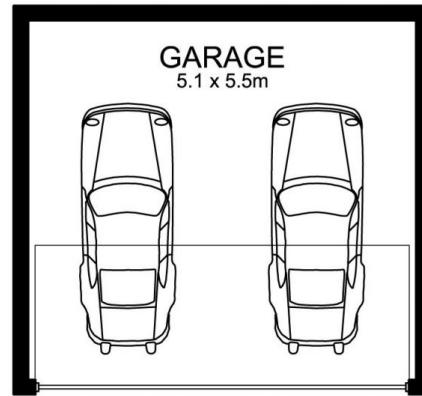
View : <https://www.crippsandcripps.com.au/sale/nsw/sutherland/gymea/residential/townhouse/5953782>

- * Open plan lounge and dining area with glass cathedral ceilings and bi-fold
- * 3 large bedrooms all with built in robes
- * Modern Caesar Stone kitchen with stainless steel quality appliances
- * Polished floors, split system air-conditioning and alarm
- * Front and rear landscaped courtyards
- * Double lock up garage

Enjoy the lifestyle and convenience - don't miss out this property is sure to impress.



GROUND FLOOR



FIRST FLOOR



**2/52-56 MANCHESTER ROAD,
GYMEA**

DISCLAIMER: All care has been taken in preparing this floor plan, however the accuracy is not guaranteed and no liability will be accepted for any reliance placed upon it

Produced by PRODUCT PHOTOGRAPHY STUDIO
mob: 0414 697 215 email: mgphoto@people.net.au